

MYLIP RABBIT PAB

货号: S219392

产品全名: MYLIP 兔多抗

基因符号: MIR; IDOL

UNIPROT ID: Q8WY64 (Gene Accession - BC002860)

背景: The ERM protein family members ezrin, radixin, and moesin are cytoskeletal effector proteins linking actin to membrane-bound proteins at the cell surface. Myosin regulatory light chain interacting protein (MYLIP) is a novel ERM-like protein that interacts with myosin regulatory light chain and inhibits neurite outgrowth.

抗原: Fusion protein of human MYLIP

经过测试的应用: ELISA, WB, IHC

推荐稀释比: IHC: 150-300;WB: 1000-5000;ELISA: 5000-10000

种属反应性: Rabbit

克隆性: Rabbit Polyclonal

亚型: Immunogen-specific rabbit IgG

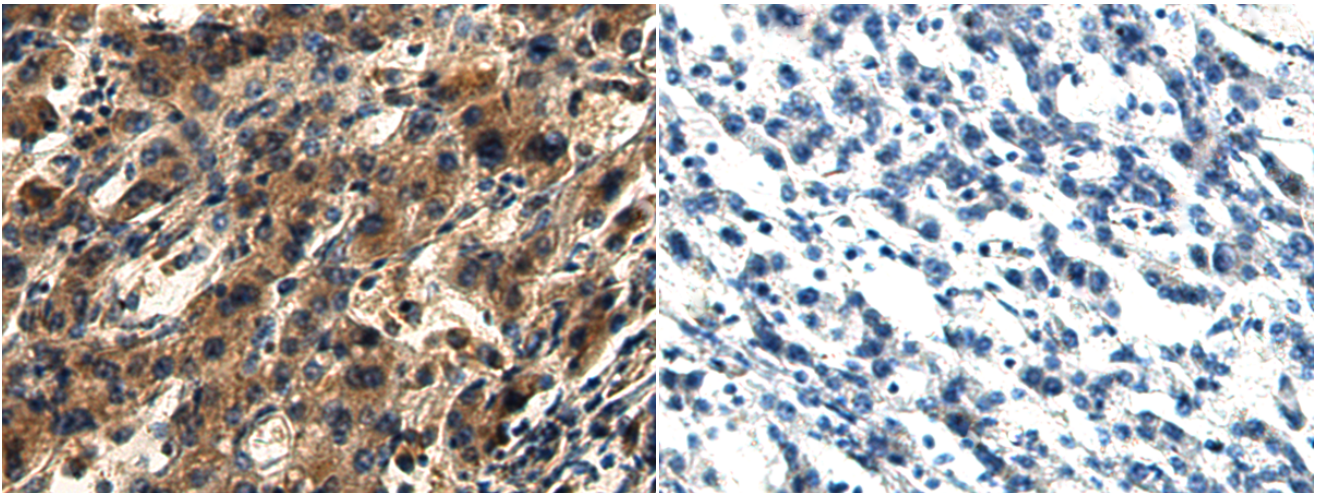
纯化: Antigen affinity purification

种属反应性: Human, Mouse, Rat

成分: PBS (without Mg²⁺ and Ca²⁺), pH 7.4, 150 mM NaCl, 0.05% Sodium Azide and 40% glycerol

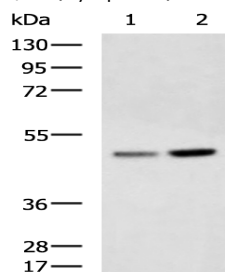
研究领域: Signal Transduction, Epigenetics and Nuclear Signaling, Metabolism, Cell Biology, Cardiovascular

储存和运输: Store at -20°C. Avoid repeated freezing and thawing



Immunohistochemistry analysis of paraffin embedded Human liver cancer tissue using 219392(MYLIP Antibody) at a dilution of 1/140(Cytoplasm).

In comparison with the IHC on the left, the same paraffin-embedded Human liver cancer tissue is first treated with the fusion protein and then with 219392(Anti-MYLIP Antibody) at dilution 1/140.



Gel: 8%SDS-PAGE, Lysate: 40 µg;

Lane 1-2: HeLa and Jurkat cell lysates;

Primary antibody: 219392(MYLIP Antibody) at dilution 1/1000;

Secondary antibody: HRP-conjugated Goat anti rabbit IgG at 1/5000 dilution;

Exposure time: 5 minutes