

## MYL9 RABBIT PAB

货号: S219930

产品全名: MYL9 兔多抗

基因符号 LC20, MLC2, MRLC1, MYRL2, MLC-2C

**UNIPROT ID:** P24844 (Gene Accession - NP\_006088 )

**背景:** Myosin, a structural component of muscle, consists of two heavy chains and four light chains. The protein encoded by this gene is a myosin light chain that may regulate muscle contraction by modulating the ATPase activity of myosin heads. The encoded protein binds calcium and is activated by myosin light chain kinase. Two transcript variants encoding different isoforms have been found for this gene.

**抗原:** Synthetic peptide of human MYL9

**经过测试的应用:** ELISA, WB, IHC

**推荐稀释比:** IHC: 50-200;WB: 1000-5000;ELISA: 2000-10000

**种属反应性:** Rabbit

**克隆性:** Rabbit Polyclonal

**亚型:** Immunogen-specific rabbit IgG

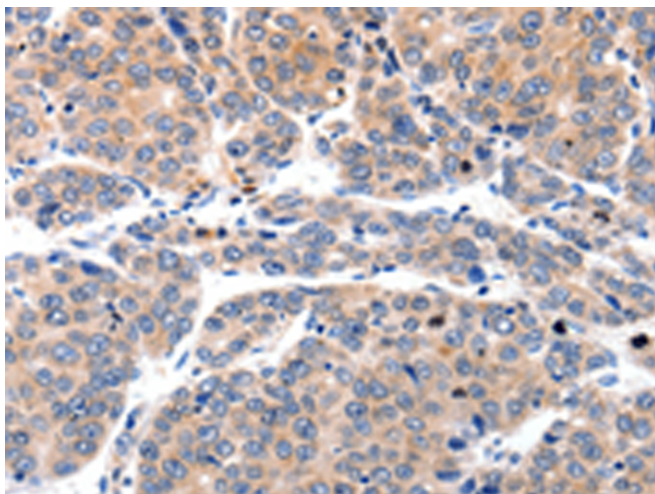
**纯化:** Antigen affinity purification

**种属反应性:** Human, Mouse, Rat

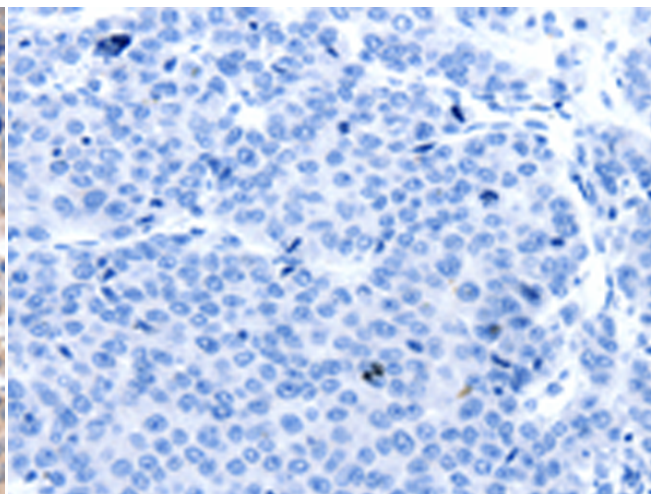
**成分:** PBS (without Mg<sup>2+</sup> and Ca<sup>2+</sup>), pH 7.4, 150 mM NaCl, 0.05% Sodium Azide and 40% glycerol

**研究领域:** Signal Transduction

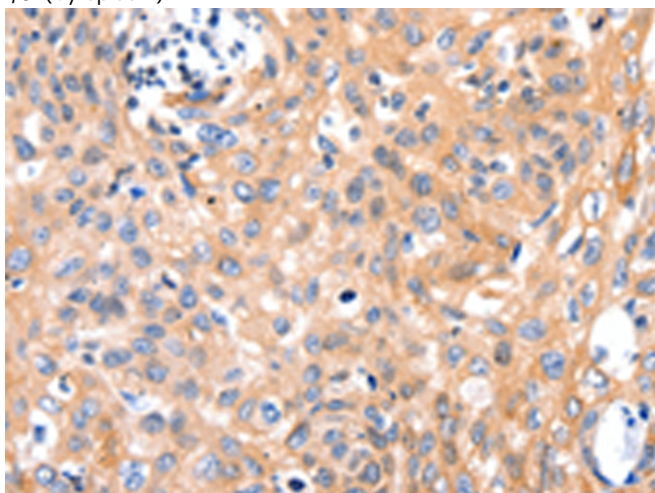
**储存和运输:** Store at -20°C. Avoid repeated freezing and thawing



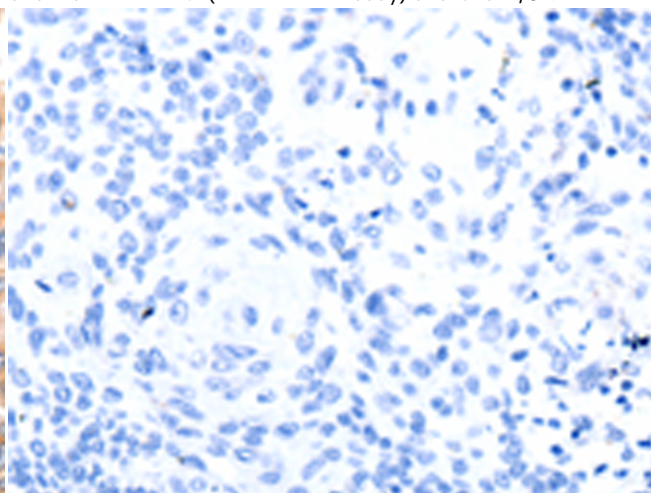
Immunohistochemistry analysis of paraffin embedded Human liver cancer tissue using 219930(MYL9 Antibody) at a dilution of 1/80(Cytoplasm).



In comparison with the IHC on the left, the same paraffin-embedded Human liver cancer tissue is first treated with the synthetic peptide and then with 219930(Anti-MYL9 Antibody) at dilution 1/80.



The image on the left is immunohistochemistry of paraffin-embedded Human cervical cancer tissue using 219930(Anti-MYL9 Antibody) at a dilution of 1/80.



In comparison with the IHC on the left, the same paraffin-embedded Human cervical cancer tissue is first treated with synthetic peptide and then with D260642(Anti-MYL9 Antibody) at dilution 1/80.



Gel: 12%SDS-PAGE, Lysate: 40 µg;  
Lane 1-2: Jurkat cells, 231 cells;  
Primary antibody: 219930(MYL9 Antibody) at dilution 1/1500;  
Secondary antibody: Goat anti rabbit IgG at 1/8000 dilution;  
Exposure time: 40 seconds



# Product Description

Pioneering GTPase and Oncogene Product Development since 2010

---