

MYH6/7 RABBIT PAB

货号: N225087

产品全名: MYH6/7 兔多抗

基因符号 Myosin heavy chain 6; Myosin heavy chain; cardiac muscle alpha isoform; MyHC-alpha; Myosin heavy chain 7; MyHC-slow; MyHC-beta

UNIPROT ID: P13533/P12883

背景: Muscle contraction.

抗原: Synthetic peptide from human protein at AA range: 1871-1920

经过测试的应用: IHC-P, ELISA

推荐稀释比: IHC: 1/50-1/100 ELISA: 1/10000

种属反应性: Rabbit

克隆性: Rabbit Polyclonal

分子量: -

亚型: IgG

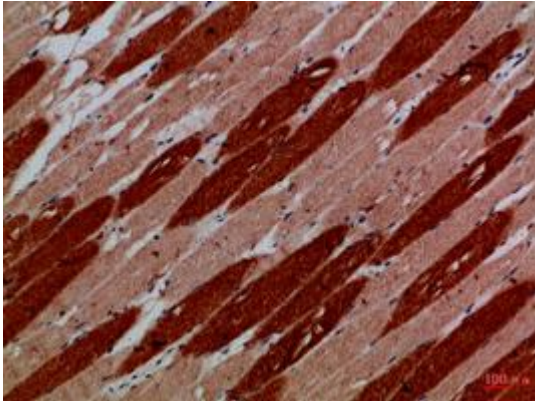
纯化: Affinity Purified

种属反应性: Human, Mouse and Rat

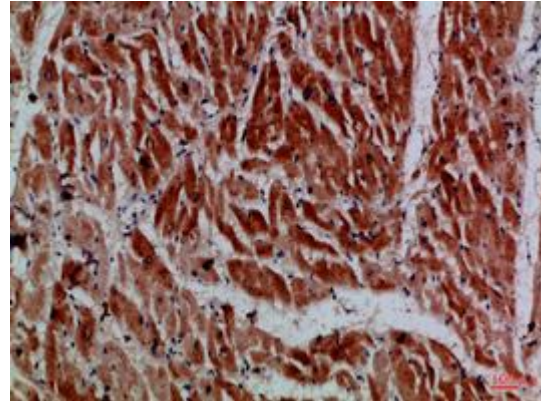
成分: PBS (without Mg²⁺ and Ca²⁺), pH 7.3 containing 50% glycerol, 0.5% BSA and 0.02% sodium azide

研究领域: Signal Transduction

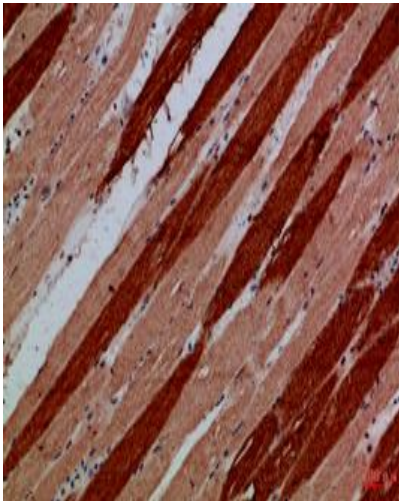
储存和运输: Store at -20°C. Avoid repeated freezing and thawing



Immunohistochemical analysis of paraffin-embedded Human tonsils using MYH6/7 antibody. High-pressure and temperature Sodium Citrate pH 6.0 was used for antigen retrieval.



Immunohistochemistry analysis of paraffin-embedded Human heart using MYH6/7 antibody. High-pressure and temperature Sodium Citrate pH 6.0 was used for antigen retrieval.



Immunohistochemistry analysis of paraffin-embedded Human skeletal muscle using MYH6/7 antibody. High-pressure and temperature Sodium Citrate pH 6.0 was used for antigen retrieval.