

MYH1 RABBIT PAB

货号: S216667

产品全名: MYH1 兔多抗

基因符号: MYH₉; MYHSA1; MyHC-2x; MyHC-2X/D

UNIPROT ID: P12882 (Gene Accession - BC114545)

背景: Myosin is a major contractile protein which converts chemical energy into mechanical energy through the hydrolysis of ATP. Myosin is a hexameric protein composed of a pair of myosin heavy chains (MYH) and two pairs of nonidentical light chains. Myosin heavy chains are encoded by a multigene family. In mammals at least 10 different myosin heavy chain (MYH) isoforms have been described from striated, smooth, and nonmuscle cells. These isoforms show expression that is spatially and temporally regulated during development.

抗原: Fusion protein of human MYH1

经过测试的应用: ELISA, IHC

推荐稀释比: IHC: 50-200; ELISA: 1000-5000

种属反应性: Rabbit

克隆性: Rabbit Polyclonal

亚型: Immunogen-specific rabbit IgG

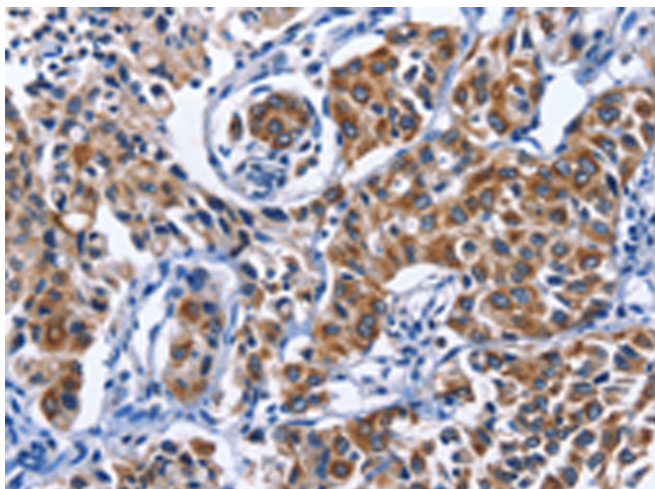
纯化: Antigen affinity purification

种属反应性: Human, Mouse

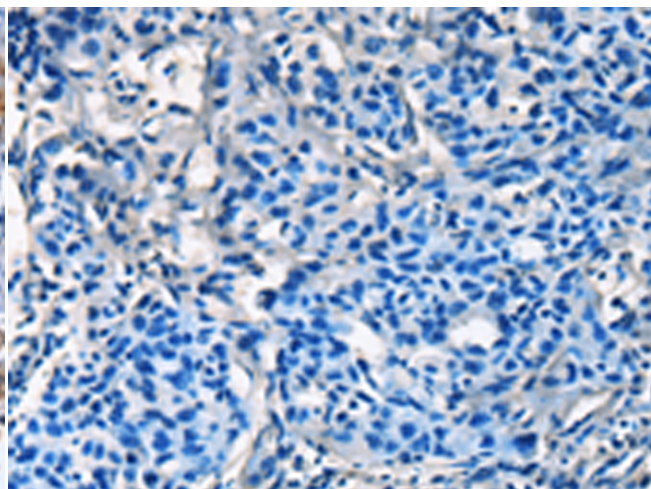
成分: PBS (without Mg²⁺ and Ca²⁺), pH 7.4, 150 mM NaCl, 0.05% Sodium Azide and 40% glycerol

研究领域: Signal Transduction

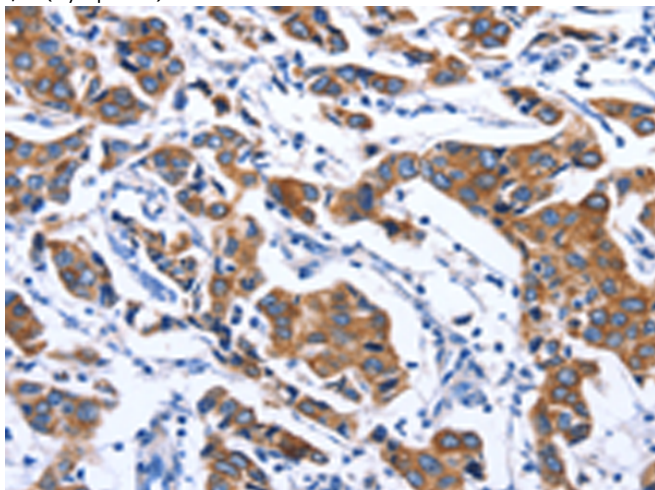
储存和运输: Store at -20°C. Avoid repeated freezing and thawing



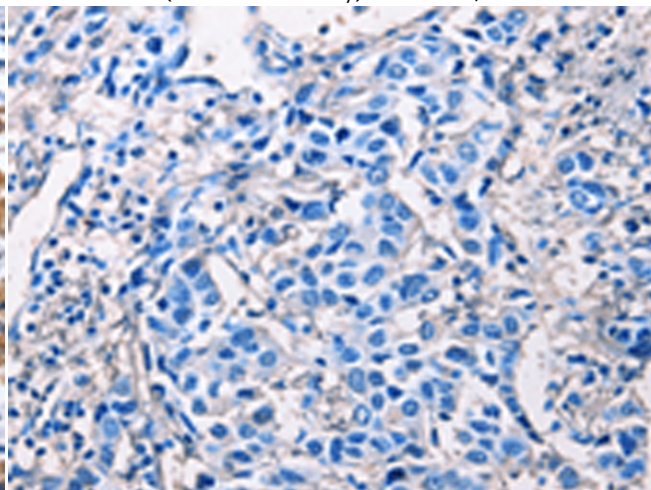
Immunohistochemistry analysis of paraffin embedded Human lung cancer tissue using 216667(MYH1 Antibody) at a dilution of 1/40(Cytoplasm).



In comparison with the IHC on the left, the same paraffin-embedded Human lung cancer tissue is first treated with the fusion protein and then with 216667(Anti-MYH1 Antibody) at dilution 1/40.



The image on the left is immunohistochemistry of paraffin-embedded Human breast cancer tissue using 216667(Anti-MYH1 Antibody) at a dilution of 1/40.



In comparison with the IHC on the left, the same paraffin-embedded Human breast cancer tissue is first treated with fusion protein and then with D221015(Anti-MYH1 Antibody) at dilution 1/40.



Product Description

Pioneering GTPase and Oncogene Product Development since 2010
