

MYF5 RABBIT PAB

货号: S213661

产品全名: MYF5 兔多抗

基因符号: bHLHc2

UNIPROT ID: P13349 (Gene Accession - NP_005584)

背景: Myogenic factor 5 is a protein that in humans is encoded by the MYF5 gene. It is a protein with a key role in regulating muscle differentiation or myogenesis. Without Myf5 and MyoD, myogenic cells will fail to progress normally during the determination stage of myogenesis. Myf5 belongs to a family of proteins known as myogenic regulatory factors (MRFs). These bHLH (basic helix loop helix) transcription factors act sequentially in myogenic differentiation. MRF family members include Myf5, MyoD (Myf3), myogenin, and MRF4 (Myf6).

抗原: Synthetic peptide of human MYF5

经过测试的应用: ELISA, IHC

推荐稀释比: IHC: 25-100; ELISA: 1000-2000

种属反应性: Rabbit

克隆性: Rabbit Polyclonal

亚型: Immunogen-specific rabbit IgG

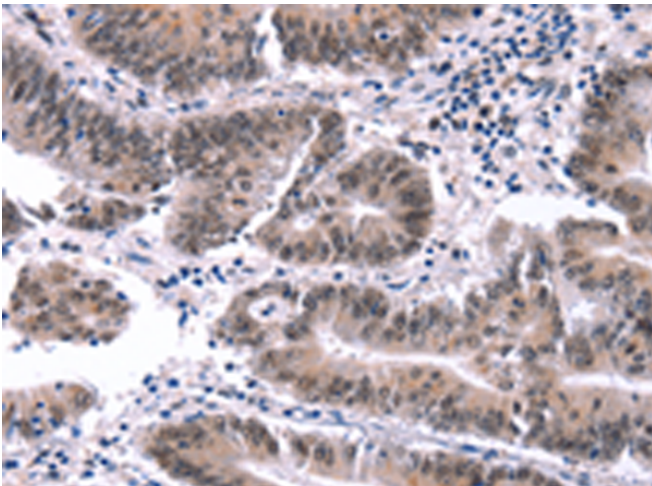
纯化: Antigen affinity purification

种属反应性: Human, Mouse

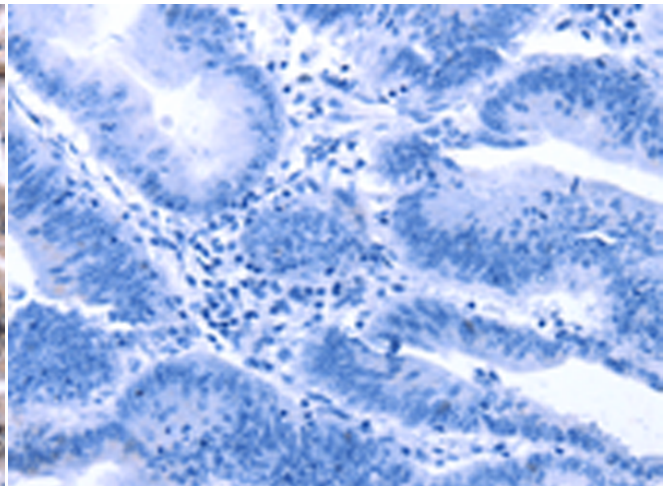
成分: PBS (without Mg²⁺ and Ca²⁺), pH 7.4, 150 mM NaCl, 0.05% Sodium Azide and 40% glycerol

研究领域: Epigenetics and Nuclear Signaling, Stem Cells, Developmental Biology

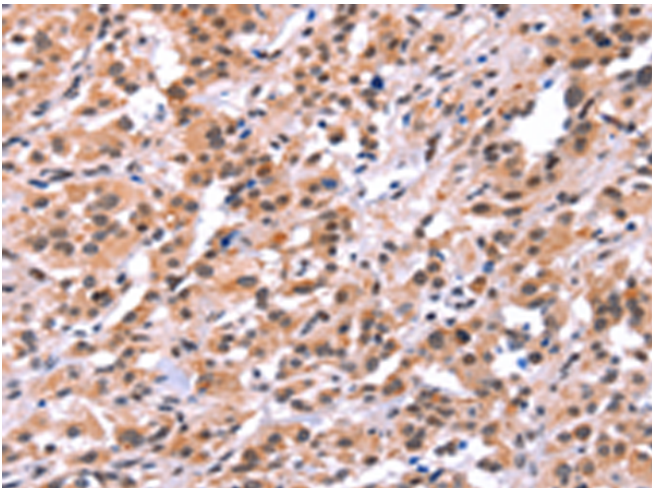
储存和运输: Store at -20°C. Avoid repeated freezing and thawing



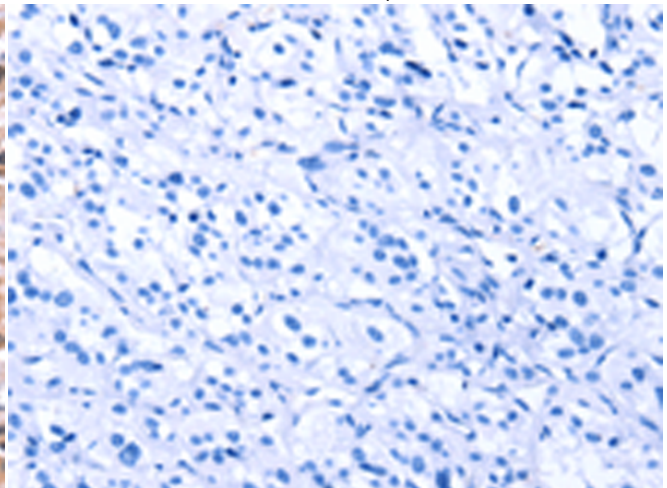
Immunohistochemistry analysis of paraffin embedded Human colon cancer tissue using 213661(MYF5 Antibody) at a dilution of 1/15(Nucleus).



In comparison with the IHC on the left, the same paraffin-embedded Human colon cancer tissue is first treated with the synthetic peptide and then with 213661(Anti-MYF5 Antibody) at dilution 1/15.



The image on the left is immunohistochemistry of paraffin-embedded Human thyroid cancer tissue using 213661(Anti-MYF5 Antibody) at a dilution of 1/15.



In comparison with the IHC on the left, the same paraffin-embedded Human thyroid cancer tissue is first treated with synthetic peptide and then with D160620(Anti-MYF5 Antibody) at dilution 1/15.



Product Description

Pioneering GTPase and Oncogene Product Development since 2010
