

## MYEF2 RABBIT PAB

货号: S219261

产品全名: MYEF2 兔多抗

基因符号: MEF-2; MST156; myEF-2; MSTP156; HsT18564

**UNIPROT ID:** Q9P2K5 (Gene Accession - BC014533)

背景: Transcriptional repressor of the myelin basic protein gene (MBP). Binds to the proximal MBI element 5'-TTGTCC-3' of the MBP promoter. Its binding to MBI and function are inhibited by PURA (By similarity).

抗原: Fusion protein of human MYEF2

经过测试的应用: ELISA, WB, IHC

推荐稀释比: IHC: 50-200;WB: 500-2000;ELISA: 5000-10000

种属反应性: Rabbit

克隆性: Rabbit Polyclonal

亚型: Immunogen-specific rabbit IgG

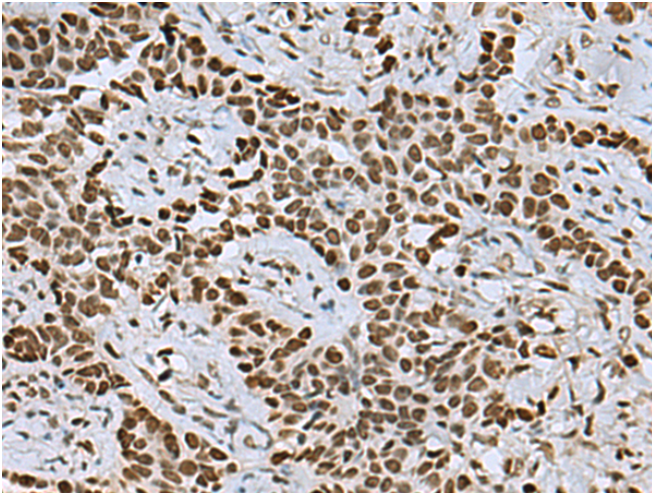
纯化: Antigen affinity purification

种属反应性: Human

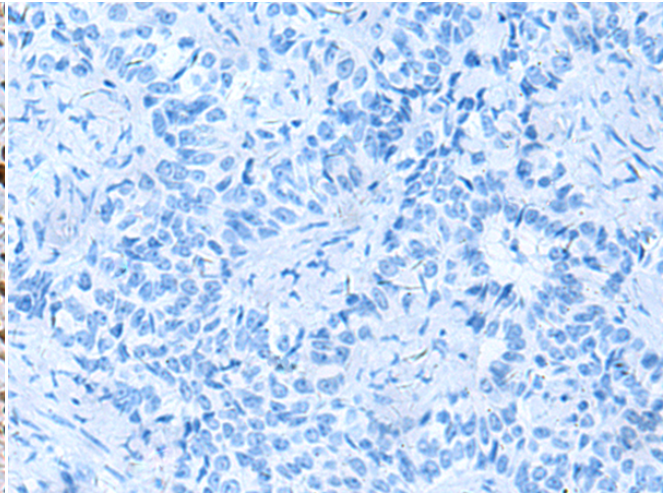
成分: PBS (without Mg<sup>2+</sup> and Ca<sup>2+</sup>), pH 7.4, 150 mM NaCl, 0.05% Sodium Azide and 40% glycerol

研究领域: Epigenetics and Nuclear Signaling

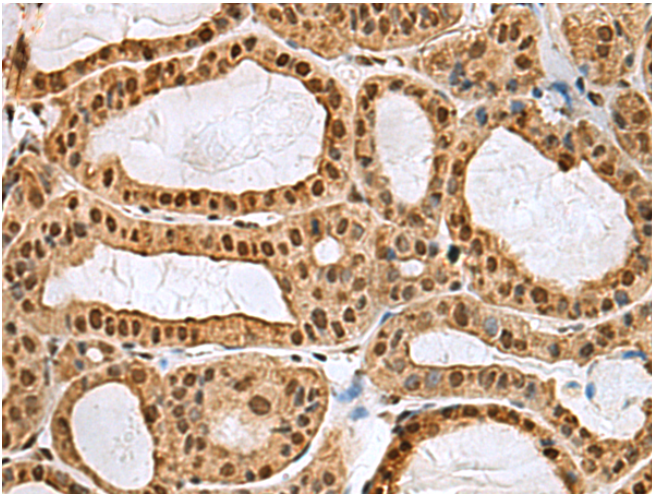
储存和运输: Store at -20°C. Avoid repeated freezing and thawing



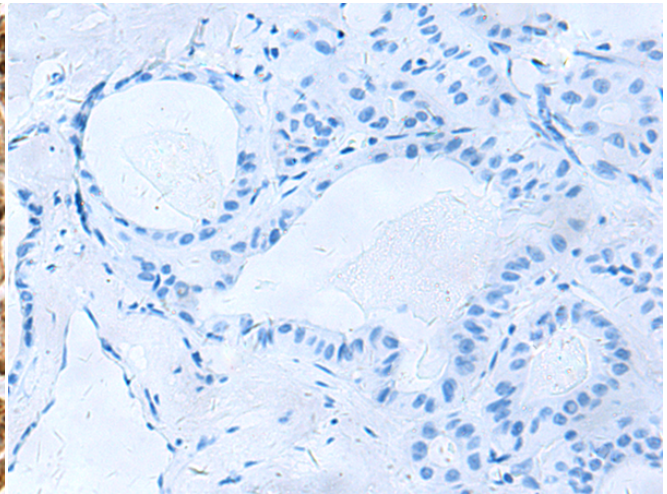
Immunohistochemistry analysis of paraffin embedded Human ovarian cancer tissue using 219261(MYEF2 Antibody) at a dilution of 1/55(Nucleus).



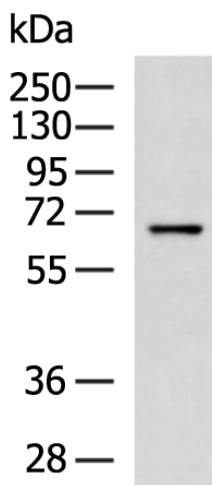
In comparison with the IHC on the left, the same paraffin-embedded Human ovarian cancer tissue is first treated with the fusion protein and then with 219261(Anti-MYEF2 Antibody) at dilution 1/55.



The image on the left is immunohistochemistry of paraffin-embedded Human thyroid cancer tissue using 219261(Anti-MYEF2 Antibody) at a dilution of 1/55.



In comparison with the IHC on the left, the same paraffin-embedded Human thyroid cancer tissue is first treated with fusion protein and then with D226147(Anti-MYEF2 Antibody) at dilution 1/55.



Gel: 8%SDS-PAGE, Lysate: 40 µg;  
Lane: 231 cell lysate;  
Primary antibody: 219261(MYEF2 Antibody) at dilution 1/600;  
Secondary antibody: HRP-conjugated Goat anti rabbit IgG at 1/5000 dilution;  
Exposure time: 1 minute



# Product Description

Pioneering GTPase and Oncogene Product Development since 2010

---