

## MYBPC1 RABBIT PAB

货号: S216162

产品全名: MYBPC1 兔多抗

基因符号: LCCS4; MYBPCC; MYBPCCS; MYOTREM; ssMyBP-C

**UNIPROT ID:** Q00872 (Gene Accession - NP\_996556)

**背景:** This gene encodes a member of the myosin-binding protein C family. Myosin-binding protein C family members are myosin-associated proteins found in the cross-bridge-bearing zone (C region) of A bands in striated muscle. The encoded protein is the slow skeletal muscle isoform of myosin-binding protein C and plays an important role in muscle contraction by recruiting muscle-type creatine kinase to myosin filaments. Mutations in this gene are associated with distal arthrogyriposis type I. Alternatively spliced transcript variants encoding multiple isoforms have been observed for this gene.

**抗原:** Synthetic peptide of human MYBPC1

**经过测试的应用:** ELISA, WB, IHC

**推荐稀释比:** IHC: 50-200;WB: 500-2000;ELISA: 5000-10000

**种属反应性:** Rabbit

**克隆性:** Rabbit Polyclonal

**亚型:** Immunogen-specific rabbit IgG

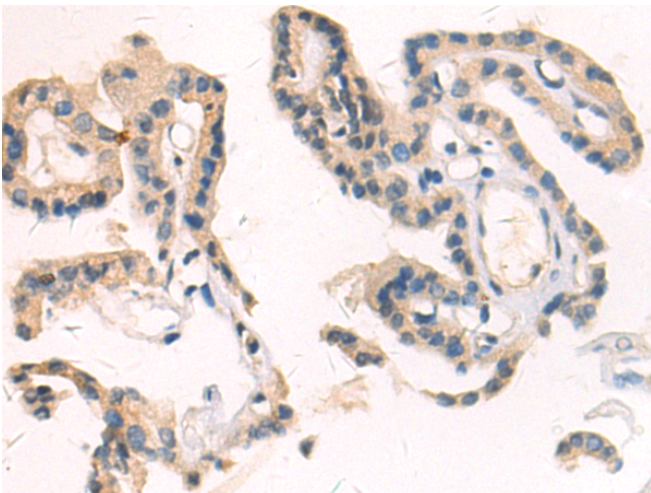
**纯化:** Antigen affinity purification

**种属反应性:** Human, Mouse

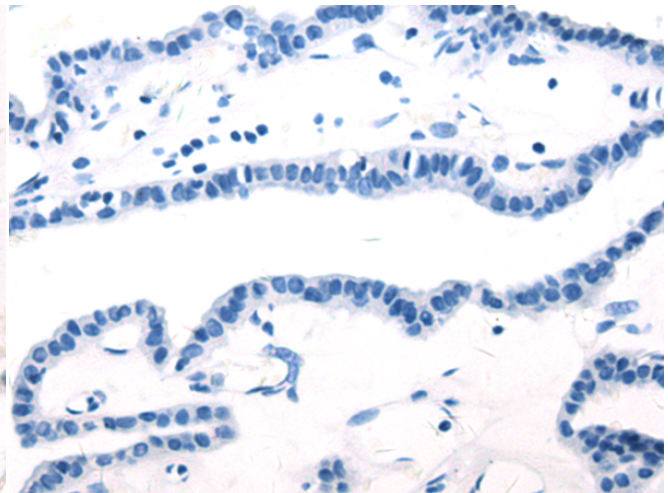
**成分:** PBS (without Mg<sup>2+</sup> and Ca<sup>2+</sup>), pH 7.4, 150 mM NaCl, 0.05% Sodium Azide and 40% glycerol

**研究领域:** Signal Transduction, Neuroscience

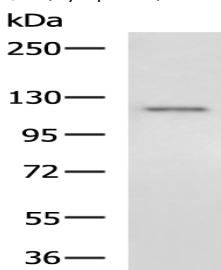
**储存和运输:** Store at -20°C. Avoid repeated freezing and thawing



Immunohistochemistry analysis of paraffin embedded Human thyroid cancer tissue using 216162(MYBPC1 Antibody) at a dilution of 1/50(Cytoplasm).



In comparison with the IHC on the left, the same paraffin-embedded Human thyroid cancer tissue is first treated with the synthetic peptide and then with 216162(Anti-MYBPC1 Antibody) at dilution 1/50.



Gel: 6%SDS-PAGE, Lysate: 40 µg;  
Lane: Mouse fetal muscle tissue lysate;  
Primary antibody: 216162(MYBPC1 Antibody) at dilution 1/700;  
Secondary antibody: HRP-conjugated Goat anti rabbit IgG at 1/5000 dilution;  
Exposure time: 2 minutes