

## MUC5AC RABBIT PAB

货号: S219927

产品全名: MUC5AC 兔多抗

基因符号 TBM; IeB; MUC5; mucin

**UNIPROT ID:** P98088 (Gene Accession - BC033831)

**背景:** Predicted to be an extracellular matrix structural constituent. Involved in phosphatidylinositol-mediated signaling. Located in cytoplasm; extracellular space; and mucus layer. Implicated in dry eye syndrome. Biomarker of several diseases, including Sjogren's syndrome; biliary tract disease (multiple); cystic fibrosis; eye disease (multiple); and pancreatic cancer (multiple).

**抗原:** Synthetic peptide of human MUC5AC

**经过测试的应用:** ELISA, IHC

**推荐稀释比:** IHC: 50-200; ELISA: 5000-10000

**种属反应性:** Rabbit

**克隆性:** Rabbit Polyclonal

**亚型:** Immunogen-specific rabbit IgG

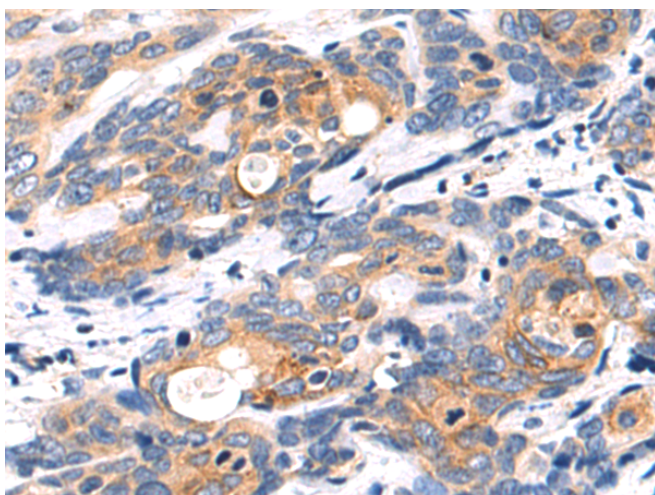
**纯化:** Antigen affinity purification

**种属反应性:** Human

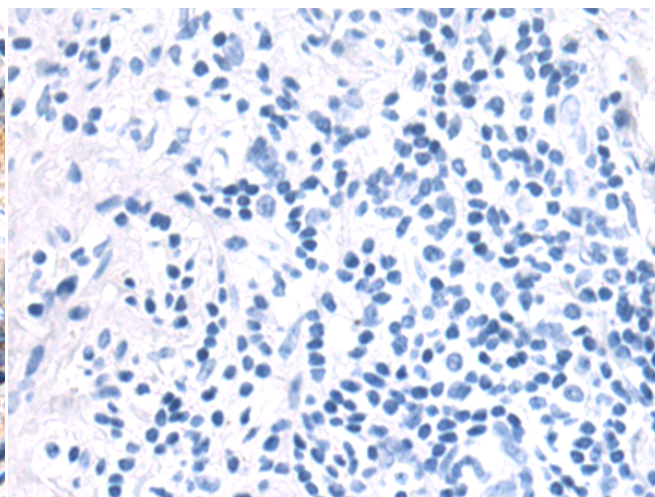
**成分:** PBS (without Mg<sup>2+</sup> and Ca<sup>2+</sup>), pH 7.4, 150 mM NaCl, 0.05% Sodium Azide and 40% glycerol

**研究领域:** Signal Transduction, Cancer

**储存和运输:** Store at -20°C. Avoid repeated freezing and thawing



Immunohistochemistry analysis of paraffin embedded Human cervical cancer tissue using 219927(MUC5AC Antibody) at a dilution of 1/50(Cytoplasm).



In comparison with the IHC on the left, the same paraffin-embedded Human cervical cancer tissue is first treated with the synthetic peptide and then with 219927(Anti-MUC5AC Antibody) at dilution 1/50.