

MUC3A RABBIT PAB

货号: S213881

产品全名: MUC3A 兔多抗

基因符号 MUC3, MUC-3A

UNIPROT ID: Q02505 (Gene Accession - XP_001725406)

背景: The mucin genes encode epithelial glycoproteins, some of which are secreted and some membrane bound. Each of the genes contains at least one large domain of tandemly repeated sequence that encodes the peptide sequence rich in serine and/or threonine residues, which carries most of the O-linked glycosylation.

抗原: Synthetic peptide of human MUC3A

经过测试的应用: ELISA, IHC

推荐稀释比: IHC: 25-100; ELISA: 1000-5000

种属反应性: Rabbit

克隆性: Rabbit Polyclonal

亚型: Immunogen-specific rabbit IgG

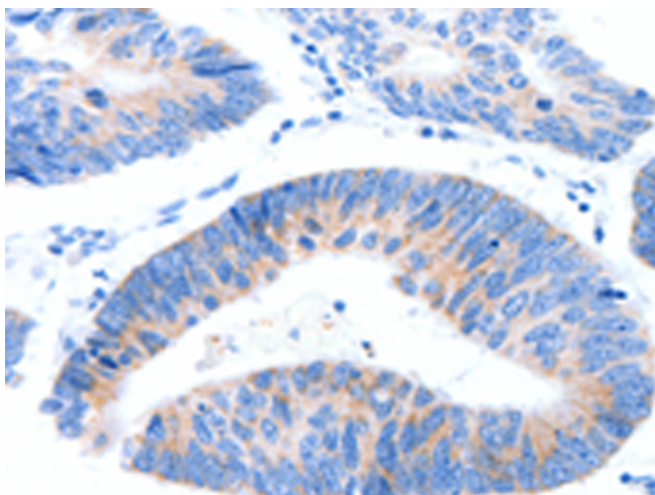
纯化: Antigen affinity purification

种属反应性: Human

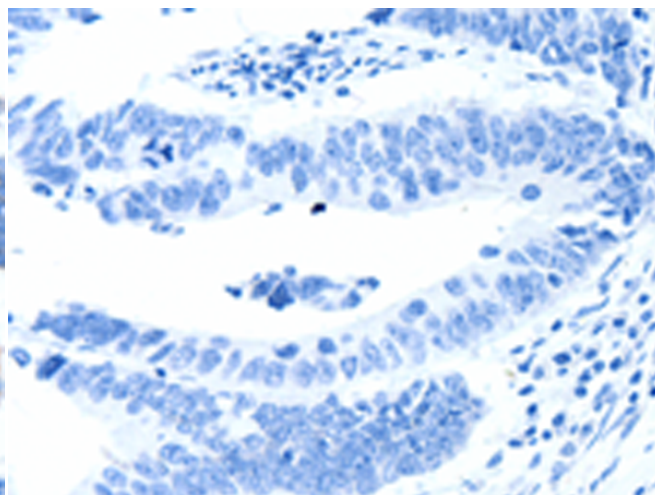
成分: PBS (without Mg²⁺ and Ca²⁺), pH 7.4, 150 mM NaCl, 0.05% Sodium Azide and 40% glycerol

研究领域: Signal Transduction

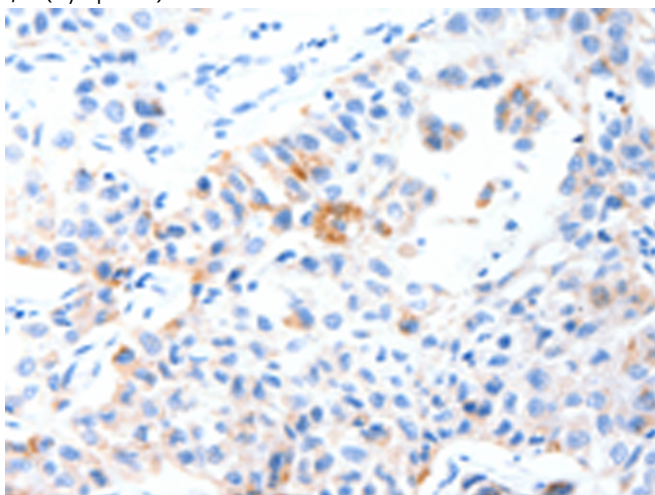
储存和运输: Store at -20°C. Avoid repeated freezing and thawing



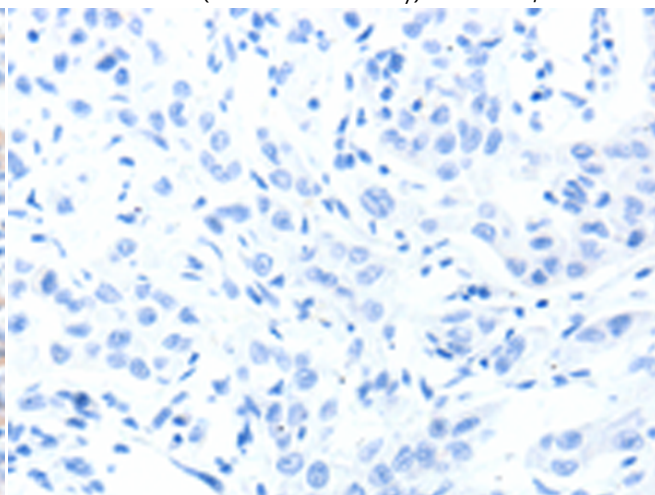
Immunohistochemistry analysis of paraffin embedded Human colon cancer tissue using 213881(MUC3A Antibody) at a dilution of 1/60(Cytoplasm).



In comparison with the IHC on the left, the same paraffin-embedded Human colon cancer tissue is first treated with the synthetic peptide and then with 213881(Anti-MUC3A Antibody) at dilution 1/60.



The image on the left is immunohistochemistry of paraffin-embedded Human lung cancer tissue using 213881(Anti-MUC3A Antibody) at a dilution of 1/60.



In comparison with the IHC on the left, the same paraffin-embedded Human lung cancer tissue is first treated with synthetic peptide and then with D161003(Anti-MUC3A Antibody) at dilution 1/60.



Product Description

Pioneering GTPase and Oncogene Product Development since 2010
