

## MTTFA RABBIT MAB

货号: N261587

产品全名: mtTFA 兔单克隆抗体

基因符号 MtTF1; mtTFA; TCF6; TCF6L1; TCF6L2; TCF6L3; TFAM;  
Transcription factor 6

**UNIPROT ID:** Q00059

背景: Binds to the mitochondrial light strand promoter and functions in mitochondrial transcription regulation. Required for accurate and efficient promoter recognition by the mitochondrial RNA polymerase.

抗原: A synthetic peptide of human mtTFA

经过测试的应用: WB,IHC-F,IHC-P,ICC/IF,IP

推荐稀释比: WB: 1/500-1/1000 IHC: 1/50-1/100 IF: 1/50-1/200 IP: 1/20

种属反应性: Rabbit

克隆性: Rabbit Monoclonal

克隆编号: R08-3E2

分子量: Calculated MW: 29 kDa; Observed MW: 24 kDa

亚型: IgG

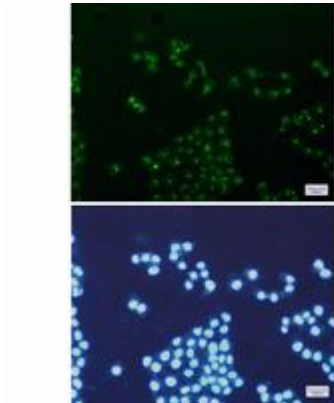
纯化: Affinity Purified

种属反应性: Human

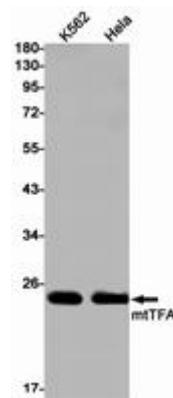
成分: PBS (without Mg<sup>2+</sup> and Ca<sup>2+</sup>), pH 7.3 containing 50% glycerol, 0.5% BSA and 0.02% sodium azide

研究领域: Tags & Cell Markers

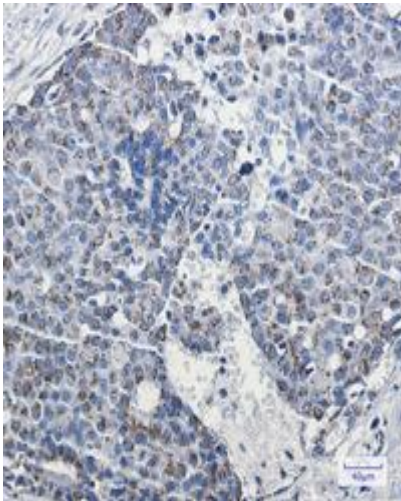
储存和运输: Store at -20°C. Avoid repeated freezing and thawing



Immunocytochemistry analysis of mtTFA/TFAM (green) in HeLa using mtTFA/TFAM antibody, and DAPI (blue)



Western blot analysis of mtTFA in K562, HeLa lysates using mtTFA antibody.



Immunohistochemistry analysis of paraffin-embedded Human breast cancer using mtTFA antibody. High-pressure and temperature Sodium Citrate pH 6.0 was used for antigen retrieval.