

MTHFD2L RABBIT PAB

货号: S218965

产品全名: MTHFD2L 兔多抗

基因符号

UNIPROT ID: Q9H903 (Gene Accession - BC032771)

背景: The specific function of this protein remains unknown.

抗原: Fusion protein of human MTHFD2L

经过测试的应用: ELISA, IHC

推荐稀释比: IHC: 30-150; ELISA: 5000-10000

种属反应性: Rabbit

克隆性: Rabbit Polyclonal

亚型: Immunogen-specific rabbit IgG

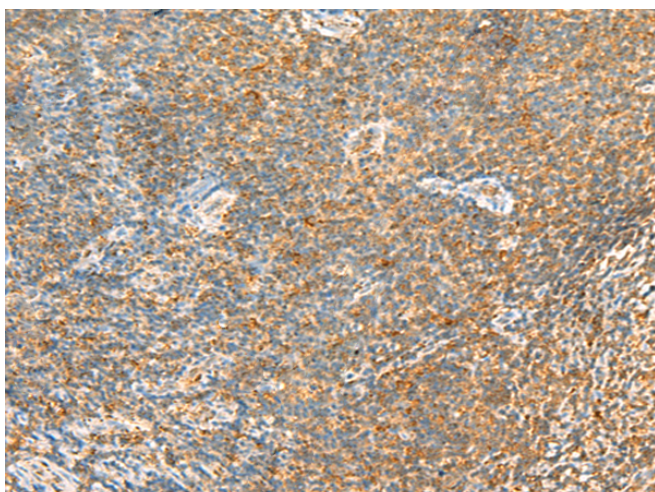
纯化: Antigen affinity purification

种属反应性: Human, Mouse, Rat

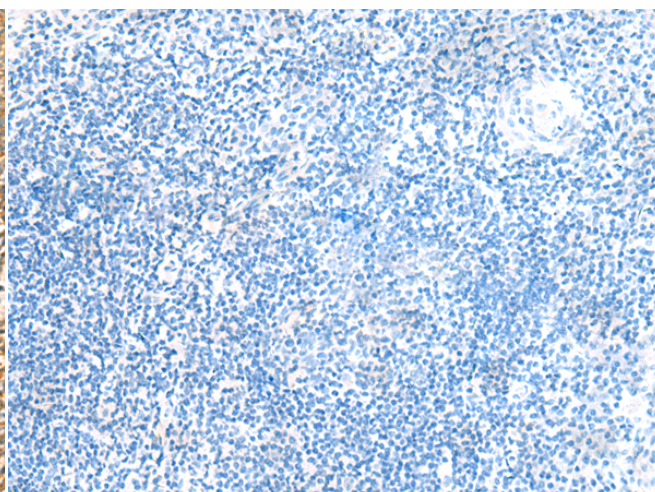
成分: PBS (without Mg²⁺ and Ca²⁺), pH 7.4, 150 mM NaCl, 0.05% Sodium Azide and 40% glycerol

研究领域: Metabolism

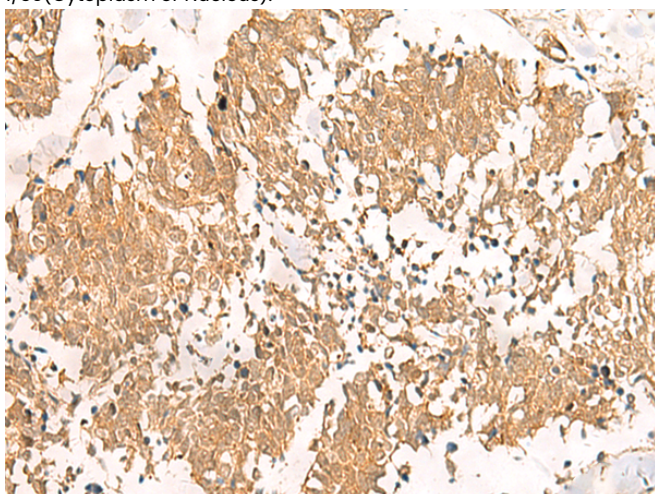
储存和运输: Store at -20°C. Avoid repeated freezing and thawing



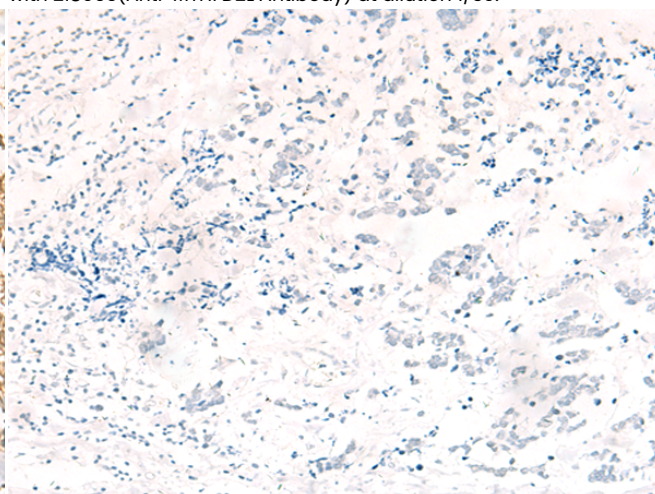
Immunohistochemistry analysis of paraffin embedded Human tonsil tissue using 218965(MTHFD2L Antibody) at a dilution of 1/30(Cytoplasm or Nucleus).



In comparison with the IHC on the left, the same paraffin-embedded Human tonsil tissue is first treated with the fusion protein and then with 218965(Anti-MTHFD2L Antibody) at dilution 1/30.



The image on the left is immunohistochemistry of paraffin-embedded Human lung cancer tissue using 218965(Anti-MTHFD2L Antibody) at a dilution of 1/30.



In comparison with the IHC on the left, the same paraffin-embedded Human lung cancer tissue is first treated with fusion protein and then with D225580(Anti-MTHFD2L Antibody) at dilution 1/30.



Product Description

Pioneering GTPase and Oncogene Product Development since 2010
