

## MTHFD2 RABBIT PAB

货号: S219338

产品全名: MTHFD2 兔多抗

基因符号: NMDMC

**UNIPROT ID:** P13995 (Gene Accession - BC001548)

**背景:** This gene encodes a nuclear-encoded mitochondrial bifunctional enzyme with methylenetetrahydrofolate dehydrogenase and methylenetetrahydrofolate cyclohydrolase activities. The enzyme functions as a homodimer and is unique in its absolute requirement for magnesium and inorganic phosphate. Formation of the enzyme-magnesium complex allows binding of NAD. Alternative splicing results in two different transcripts, one protein-coding and the other not protein-coding. This gene has a pseudogene on chromosome 7.

**抗原:** Fusion protein of human MTHFD2

**经过测试的应用:** ELISA, IHC

**推荐稀释比:** IHC: 50-200; ELISA: 5000-10000

**种属反应性:** Rabbit

**克隆性:** Rabbit Polyclonal

**亚型:** Immunogen-specific rabbit IgG

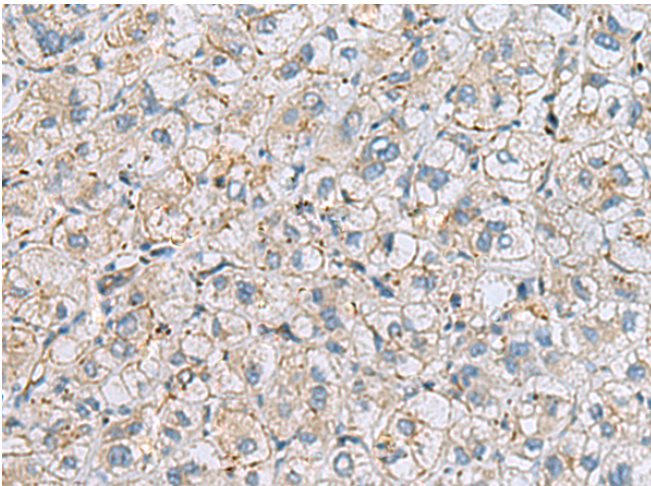
**纯化:** Antigen affinity purification

**种属反应性:** Human, Mouse

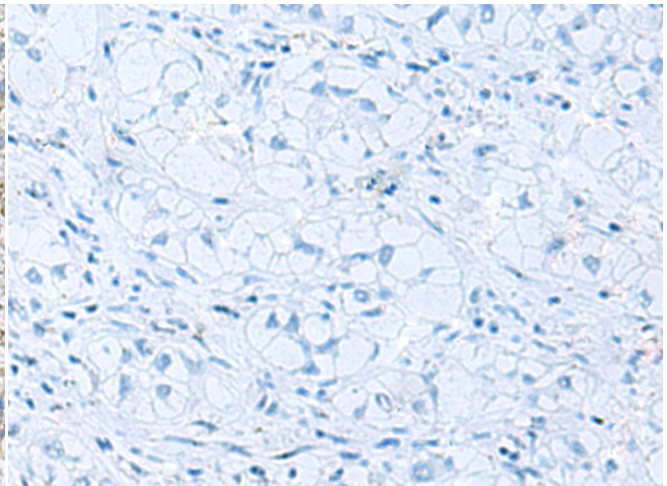
**成分:** PBS (without Mg<sup>2+</sup> and Ca<sup>2+</sup>), pH 7.4, 150 mM NaCl, 0.05% Sodium Azide and 40% glycerol

**研究领域:** Metabolism

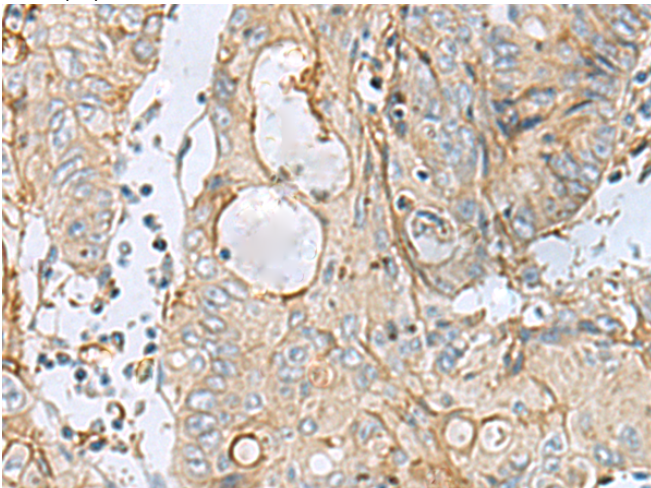
**储存和运输:** Store at -20°C. Avoid repeated freezing and thawing



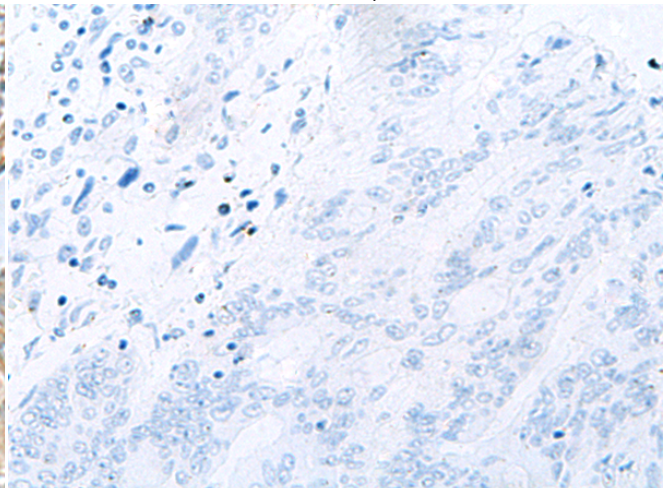
Immunohistochemistry analysis of paraffin embedded Human liver cancer tissue using 219338(MTHFD2 Antibody) at a dilution of 1/65(Cytoplasm).



In comparison with the IHC on the left, the same paraffin-embedded Human liver cancer tissue is first treated with the fusion protein and then with 219338(Anti-MTHFD2 Antibody) at dilution 1/65.



The image on the left is immunohistochemistry of paraffin-embedded Human colorectal cancer tissue using 219338(Anti-MTHFD2 Antibody) at a dilution of 1/65.



In comparison with the IHC on the left, the same paraffin-embedded Human colorectal cancer tissue is first treated with fusion protein and then with D226470(Anti-MTHFD2 Antibody) at dilution 1/65.



# Product Description

Pioneering GTPase and Oncogene Product Development since 2010

---