

MTH1 RABBIT MAB

货号: N262546

产品全名: MTH1 兔单克隆抗体

基因符号 MTH1; NUDT 1

UNIPROT ID: P36639

背景: Antimutagenic. Acts as a sanitizing enzyme for oxidized nucleotide pools, thus suppressing cell dysfunction and death induced by oxidative stress. Hydrolyzes 8-oxo-dGTP, 8-oxo-dATP and 2-OH-dATP, thus preventing misincorporation of oxidized purine nucleoside triphosphates into DNA and subsequently preventing A:T to C:G and G:C to T:A transversions.

抗原: Recombinant protein of human MTH1

经过测试的应用: WB, ICC/IF, IP

推荐稀释比: WB: 1/500-1/1000 IF: 1/50-1/200 IP: 1/20

种属反应性: Rabbit

克隆性: Rabbit Monoclonal

克隆编号: R06-2K9

分子量: Calculated MW: 18 kDa; Observed MW: 18 kDa

亚型: IgG

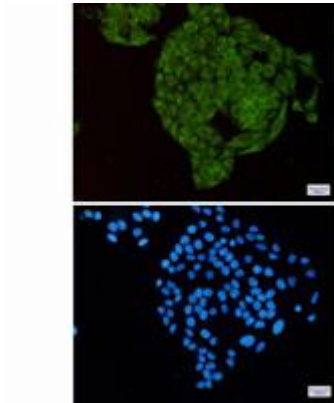
纯化: Affinity Purified

种属反应性: Human

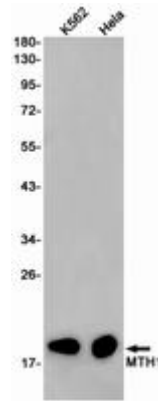
成分: PBS (without Mg²⁺ and Ca²⁺), pH 7.3 containing 50% glycerol, 0.5% BSA and 0.02% sodium azide

研究领域: Epigenetics and Nuclear Signaling

储存和运输: Store at -20°C. Avoid repeated freezing and thawing



Immunocytochemistry analysis of MTH1 (green) in HeLa using MTH1 antibody, and DAPI (blue)



Western blot analysis of MTH1 in K562, HeLa lysates using MTH1 antibody.