

MTG2 RABBIT PAB

货号: S213124

产品全名: MTG2 兔多抗

基因符号: ObgH1; GTPBP5; dJ1005F21.2

UNIPROT ID: Q9H4K7 (Gene Accession - BC036716)

背景: Small G proteins, such as GTPBP5, act as molecular switches that play crucial roles in the regulation of fundamental cellular processes such as protein synthesis, nuclear transport, membrane trafficking, and signal transduction (Hirano et al., 2006 [PubMed 17054726]).

抗原: Fusion protein of human MTG2

经过测试的应用: ELISA, WB, IHC

推荐稀释比: IHC: 150-300;WB: 1000-5000;ELISA: 5000-10000

种属反应性: Rabbit

克隆性: Rabbit Polyclonal

亚型: Immunogen-specific rabbit IgG

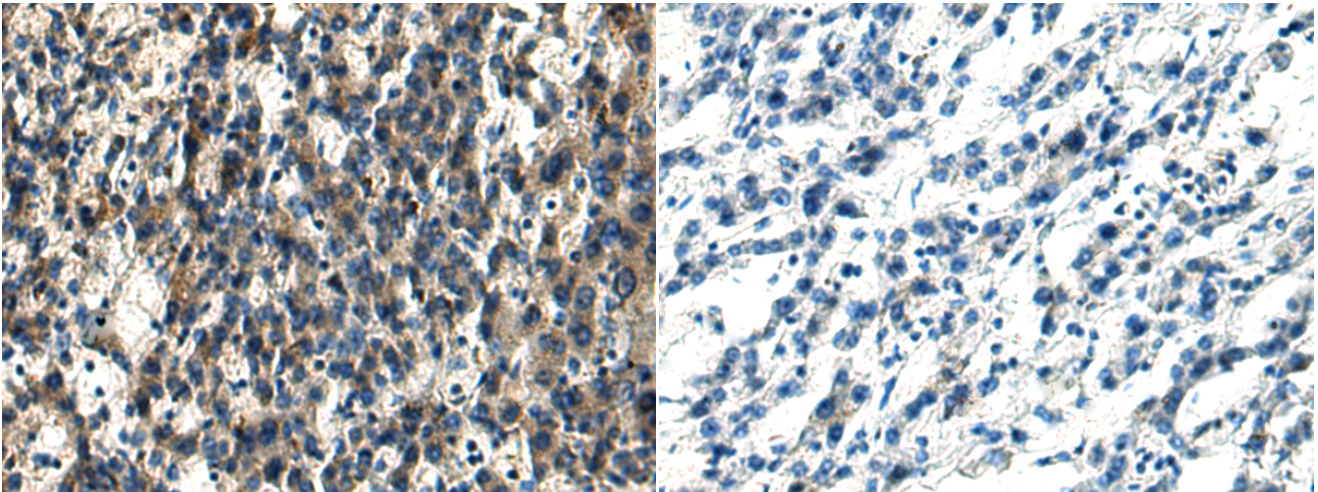
纯化: Antigen affinity purification

种属反应性: Human

成分: PBS (without Mg²⁺ and Ca²⁺), pH 7.4, 150 mM NaCl, 0.05% Sodium Azide and 40% glycerol

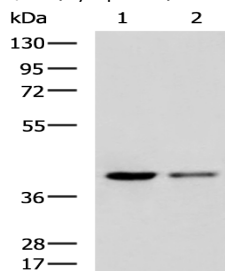
研究领域: Signal Transduction

储存和运输: Store at -20°C. Avoid repeated freezing and thawing



Immunohistochemistry analysis of paraffin embedded Human liver cancer tissue using 213124(MTG2 Antibody) at a dilution of 1/160(Cytoplasm).

In comparison with the IHC on the left, the same paraffin-embedded Human liver cancer tissue is first treated with the fusion protein and then with 213124(Anti-MTG2 Antibody) at dilution 1/160.



Gel: 8%SDS-PAGE, Lysate: 40 µg;

Lane 1-2: PC3 and HeLa cell lysates;

Primary antibody: 213124(MTG2 Antibody) at dilution 1/1000;

Secondary antibody: HRP-conjugated Goat anti rabbit IgG at 1/5000 dilution;

Exposure time: 1 minute