

MTCO2 RABBIT PAB

货号: N225696

产品全名: MTCO2 兔多抗

基因符号 MT-CO2; COX2; CO2; Cytochrome c oxidase II; MTCO2; COII; COXII

UNIPROT ID: P00403

背景: Cytochrome c oxidase is the component of the respiratory chain that catalyzes the reduction of oxygen to water. Subunits 1-3 form the functional core of the enzyme complex. Subunit 2 transfers the electrons from cytochrome c via its binuclear copper A center to the bimetallic center of the catalytic subunit 1.

抗原: A synthesized peptide derived from human MTCO2

经过测试的应用: WB,IHC-P,ICC/IF,IP,FC

推荐稀释比: WB: 1/500-1/1000 IHC: 1/50-1/100 IF: 1/50-1/200 IP: 1/20 FC: 1/50-1/100

种属反应性: Rabbit

克隆性: Rabbit Polyclonal

分子量: Calculated MW: 26 kDa; Observed MW: 21 kDa

亚型: IgG

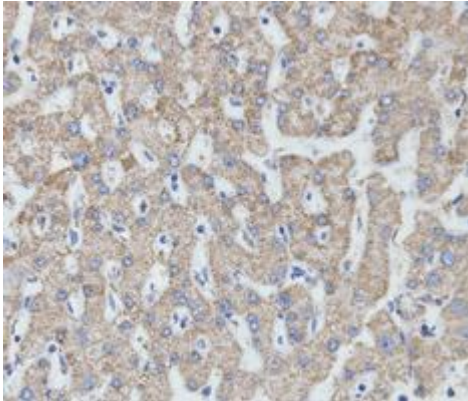
纯化: Affinity Chromatography

种属反应性: Human

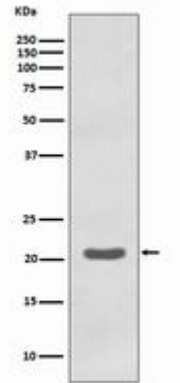
成分: PBS (without Mg²⁺ and Ca²⁺), pH 7.3 containing 50% glycerol, 0.5% BSA and 0.02% sodium azide

研究领域: Signal Transduction

储存和运输: Store at -20°C. Avoid repeated freezing and thawing



Immunohistochemistry analysis of paraffin-embedded Human liver using MTCO2 antibody. High-pressure and temperature Sodium Citrate pH 6.0 was used for antigen retrieval.



Western blot analysis of MTCO2 in K562 lysates using MTCO2 antibody.