

## MTCO2 RABBIT MAB

货号: N262543

产品全名: MTCO2 兔单克隆抗体

基因符号 MT-CO2; COX2; CO2; Cytochrome c oxidase II; MTCO2; COII; COXII

**UNIPROT ID:** P00403

**背景:** Cytochrome c oxidase is the component of the respiratory chain that catalyzes the reduction of oxygen to water. Subunits 1-3 form the functional core of the enzyme complex. Subunit 2 transfers the electrons from cytochrome c via its binuclear copper A center to the bimetallic center of the catalytic subunit 1.

**抗原:** A synthetic peptide of human MTCO2

**经过测试的应用:** WB,IHC-F,IHC-P,ICC/IF,IP

**推荐稀释比:** WB: 1/500-1/1000 IHC: 1/50-1/100 IF: 1/50-1/200 IP: 1/20

**种属反应性:** Rabbit

**克隆性:** Rabbit Monoclonal

**克隆编号:** R05-2E2

**分子量:** Calculated MW: 26 kDa; Observed MW: 21 kDa

**亚型:** IgG

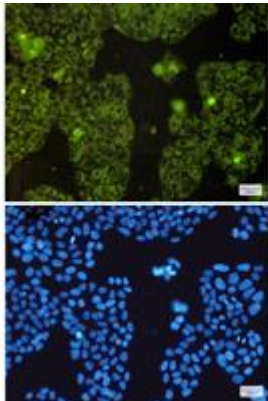
**纯化:** Affinity Purified

**种属反应性:** Human

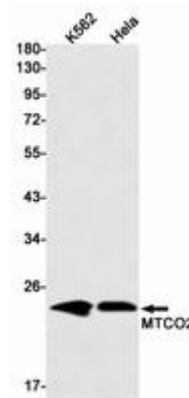
**成分:** PBS (without Mg<sup>2+</sup> and Ca<sup>2+</sup>), pH 7.3 containing 50% glycerol, 0.5% BSA and 0.02% sodium azide

**研究领域:** Signal Transduction

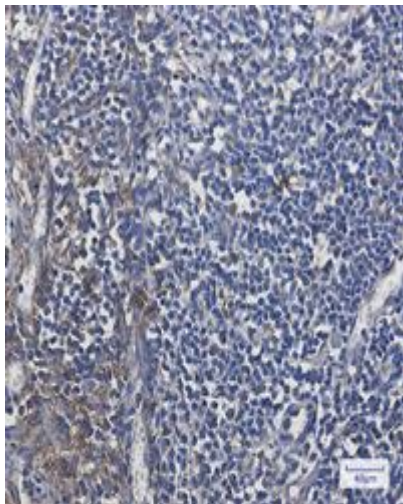
**储存和运输:** Store at -20°C. Avoid repeated freezing and thawing



Immunocytochemistry analysis of MTCO2 (green) in HeLa using MTCO2 antibody, and DAPI (blue)



Western blot analysis of MTCO2 in K562, HeLa lysates using MTCO2 antibody.



Immunohistochemistry analysis of paraffin-embedded Human tonsil using MTCO2 antibody. High-pressure and temperature Sodium Citrate pH 6.0 was used for antigen retrieval.