

## MTCH2 RABBIT PAB

货号: S217616

产品全名: MTCH2 兔多抗

基因符号 MIMP; HSPC032; SLC25A50

**UNIPROT ID:** Q9Y6C9 (Gene Accession - BC000875 )

**背景:** Mitochondrial carrier homolog 2 also known as MTCH2 is a protein which in humans is encoded by the MTCH2 gene. MTCH2 (mitochondrial carrier homolog 2), is a 303 amino acid multi-pass mitochondrial membrane protein that contains two solcar repeats and functions to induce mitochondrial depolarization. The substrate transported is not yet known. Induces mitochondrial depolarization.

**抗原:** Fusion protein of human MTCH2

**经过测试的应用:** ELISA, WB, IHC

**推荐稀释比:** IHC: 50-200;WB: 1000-5000;ELISA: 2000-10000

**种属反应性:** Rabbit

**克隆性:** Rabbit Polyclonal

**亚型:** Immunogen-specific rabbit IgG

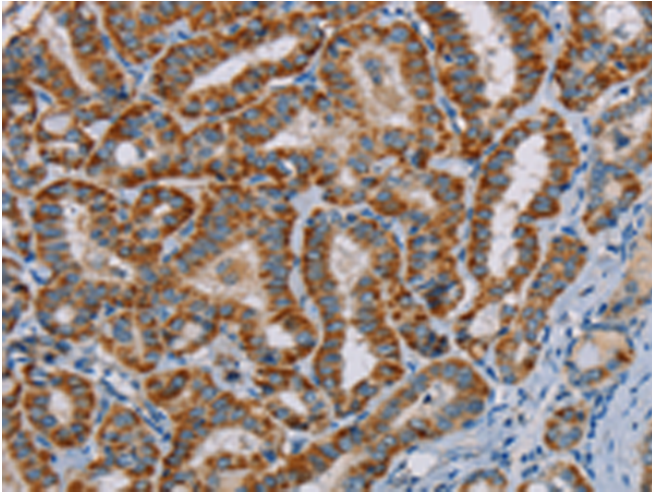
**纯化:** Antigen affinity purification

**种属反应性:** Human, Mouse

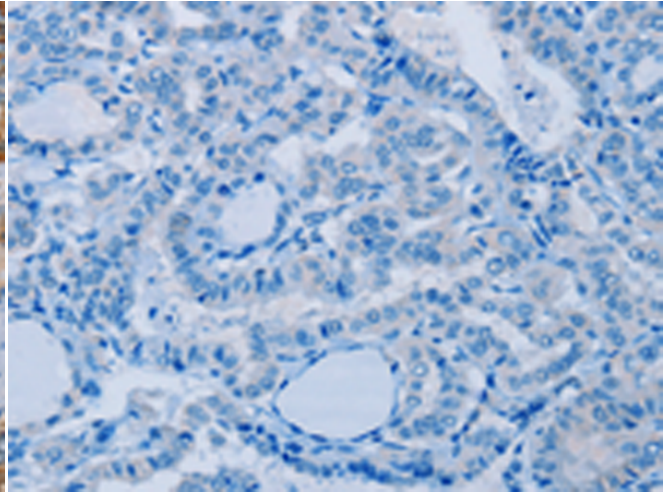
**成分:** PBS (without Mg<sup>2+</sup> and Ca<sup>2+</sup>), pH 7.4, 150 mM NaCl, 0.05% Sodium Azide and 40% glycerol

**研究领域:** Metabolism, Cancer

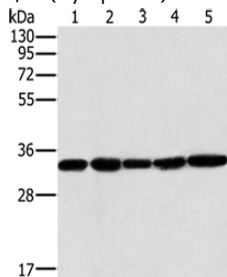
**储存和运输:** Store at -20°C. Avoid repeated freezing and thawing



Immunohistochemistry analysis of paraffin embedded Human thyroid cancer tissue using 217616(MTCH2 Antibody) at a dilution of 1/45(Cytoplasm).



In comparison with the IHC on the left, the same paraffin-embedded Human thyroid cancer tissue is first treated with the fusion protein and then with 217616(Anti-MTCH2 Antibody) at dilution 1/45.



Gel: 10%SDS-PAGE, Lysate: 40 µg;  
Lane 1-5: Human testis tissue, K562 cells, PC3 cells, human liver cancer tissue, hela cells;  
Primary antibody: 217616(MTCH2 Antibody) at dilution 1/400;  
Secondary antibody: Goat anti rabbit IgG at 1/8000 dilution;  
Exposure time: 40 seconds