

MTBP RABBIT PAB

货号: S220723

产品全名: MTBP 兔多抗

基因符号: MDM2BP

UNIPROT ID: Q96DY7 (Gene Accession - NP_071328)

背景: This gene encodes a protein that interacts with the oncoprotein mouse double minute 2. The encoded protein regulates progression through the cell cycle and may be involved in tumor formation.

抗原: Synthetic peptide of human MTBP

经过测试的应用: ELISA, IHC

推荐稀释比: IHC: 25-100; ELISA: 1000-2000

种属反应性: Rabbit

克隆性: Rabbit Polyclonal

亚型: Immunogen-specific rabbit IgG

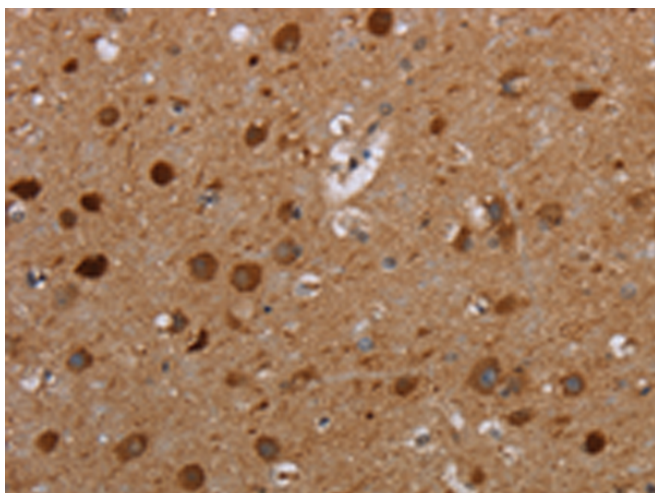
纯化: Antigen affinity purification

种属反应性: Human, Mouse

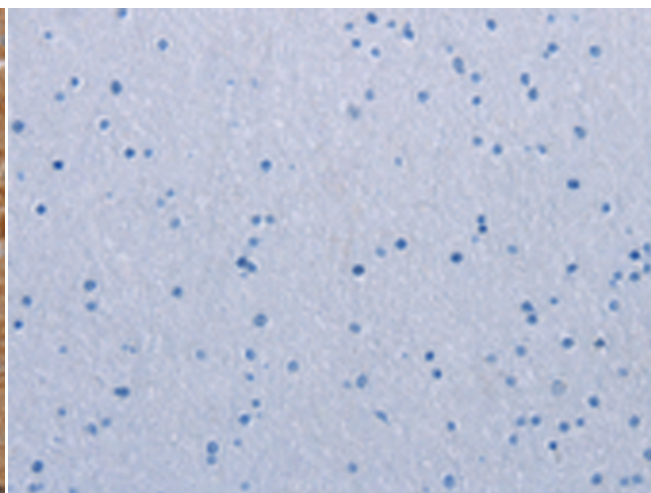
成分: PBS (without Mg²⁺ and Ca²⁺), pH 7.4, 150 mM NaCl, 0.05% Sodium Azide and 40% glycerol

研究领域: Epigenetics and Nuclear Signaling, Cancer

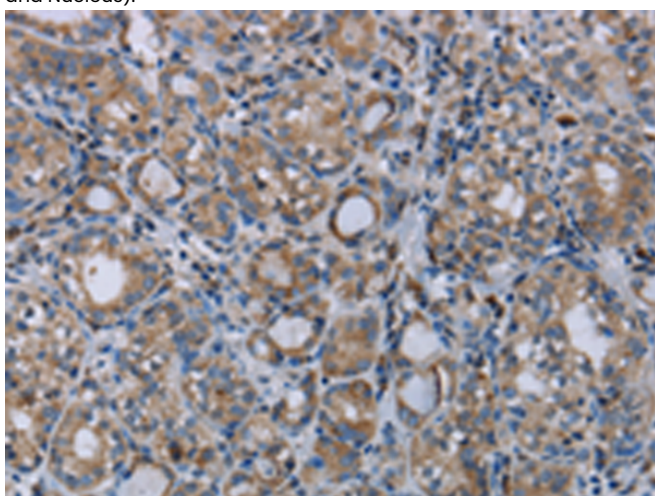
储存和运输: Store at -20°C. Avoid repeated freezing and thawing



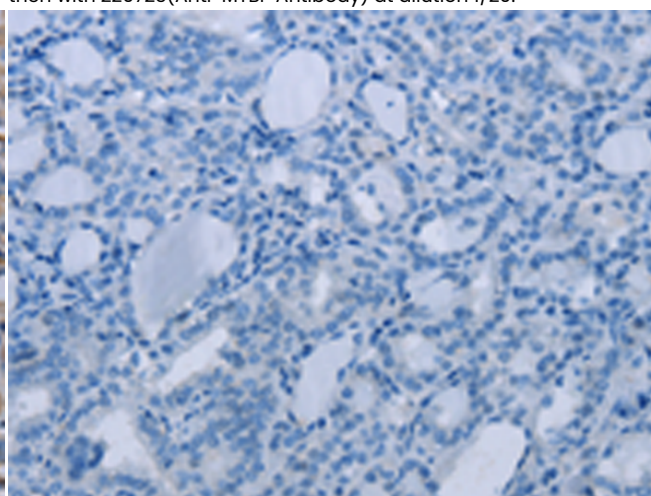
Immunohistochemistry analysis of paraffin embedded Human brain tissue using 220723(MTBP Antibody) at a dilution of 1/20(Cytoplasm and Nucleus).



In comparison with the IHC on the left, the same paraffin-embedded Human brain tissue is first treated with the synthetic peptide and then with 220723(Anti-MTBP Antibody) at dilution 1/20.



The image on the left is immunohistochemistry of paraffin-embedded Human thyroid cancer tissue using 220723(Anti-MTBP Antibody) at a dilution of 1/20.



In comparison with the IHC on the left, the same paraffin-embedded Human thyroid cancer tissue is first treated with synthetic peptide and then with D261924(Anti-MTBP Antibody) at dilution 1/20.



Product Description

Pioneering GTPase and Oncogene Product Development since 2010
