

MTA3 RABBIT PAB

货号: S215236

产品全名: MTA3 兔多抗

基因符号

UNIPROT ID: Q9BTC8 (Gene Accession - NP_001269684)

背景: Metastasis-associated protein 3 (MTA3) is a subunit of the Mi-2/NuRD transcriptional corepressor complex. MTA3 and the Mi-2/NuRD complex mediate repression of Snail in breast cancer cells where MTA3 works to maintain a differentiated, epithelial status. The protein is involved in gene expression regulation by covalent modifications of histone proteins. There are two known isoforms of MTA3, a short and a long form. The short isoform binds to ER and sequesters it to the cytoplasm and better non-genomic responses, whereas the long form is found in the nucleus. MTA3 is widely expressed with highest expression in brain, adrenal glands, ovaries and virgin mammary glands. It has been found to be expressed in higher levels in tumors than in adjacent normal tissue in the same individual. Plays a role in maintenance of the normal epithelial architecture through the repression of SNAIL transcription in a histone deacetylase-dependent manner, and thus the regulation of E-cadherin levels. Contributes to transcriptional repression by BCL6.

抗原: Synthetic peptide of human MTA3

经过测试的应用: ELISA, IHC

推荐稀释比: IHC: 25-100; ELISA: 5000-10000

种属反应性: Rabbit

克隆性: Rabbit Polyclonal

亚型: Immunogen-specific rabbit IgG

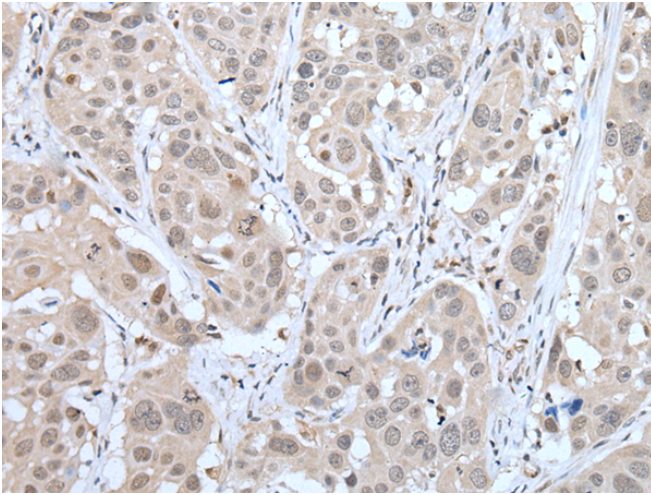
纯化: Antigen affinity purification

种属反应性: Human, Mouse

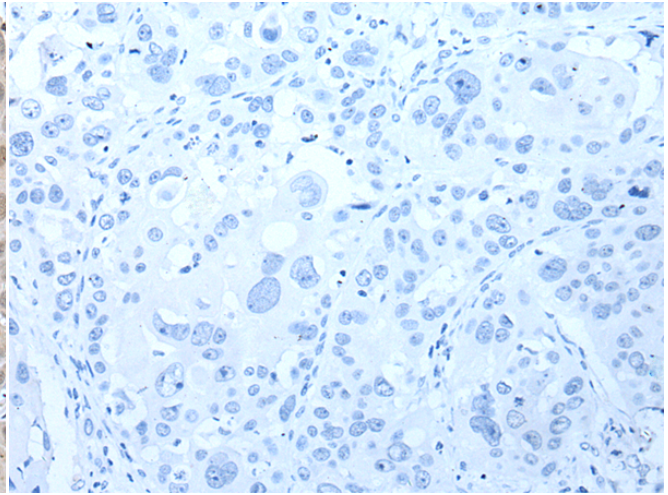
成分: PBS (without Mg²⁺ and Ca²⁺), pH 7.4, 150 mM NaCl, 0.05% Sodium Azide and 40% glycerol

研究领域: Signal Transduction, Epigenetics and Nuclear Signaling

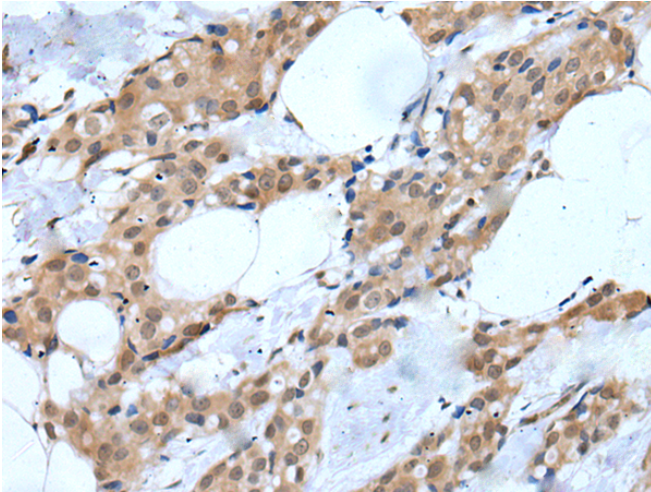
储存和运输: Store at -20°C. Avoid repeated freezing and thawing



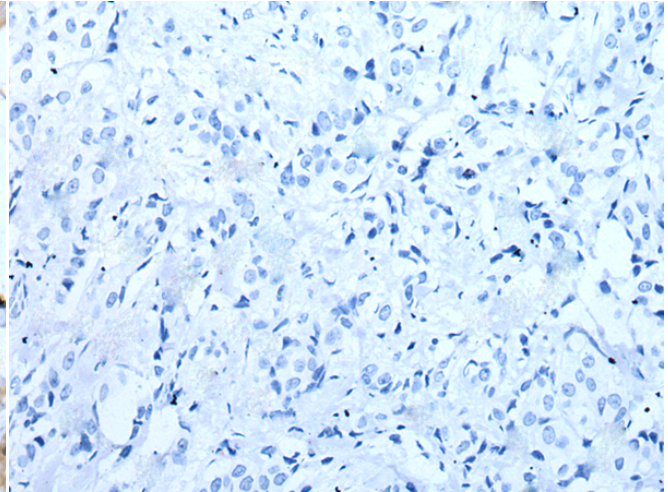
Immunohistochemistry analysis of paraffin embedded Human esophagus cancer tissue using 215236(MTA3 Antibody) at a dilution of 1/20(Nucleus).



In comparison with the IHC on the left, the same paraffin-embedded Human esophagus cancer tissue is first treated with the synthetic peptide and then with 215236(Anti-MTA3 Antibody) at dilution 1/20.



The image on the left is immunohistochemistry of paraffin-embedded Human breast cancer tissue using 215236(Anti-MTA3 Antibody) at a dilution of 1/20.



In comparison with the IHC on the left, the same paraffin-embedded Human breast cancer tissue is first treated with synthetic peptide and then with D163074(Anti-MTA3 Antibody) at dilution 1/20.