

## MT-CO2 RABBIT PAB

货号: S219604

产品全名: MT-CO2 兔多抗

基因符号: COII; MTCO2; COX2

**UNIPROT ID:** P00403 (Gene Accession - YP\_003024029)

**背景:** Cytochrome c oxidase is the component of the respiratory chain that catalyzes the reduction of oxygen to water. Subunits 1-3 form the functional core of the enzyme complex. Subunit 2 transfers the electrons from cytochrome c via its binuclear copper A center to the bimetallic center of the catalytic subunit 1.

**抗原:** Synthetic peptide of human MT-CO2

**经过测试的应用:** ELISA, WB, IHC

**推荐稀释比:** IHC: 50-200;WB: 1000-5000;ELISA: 5000-10000

**种属反应性:** Rabbit

**克隆性:** Rabbit Polyclonal

**亚型:** Immunogen-specific rabbit IgG

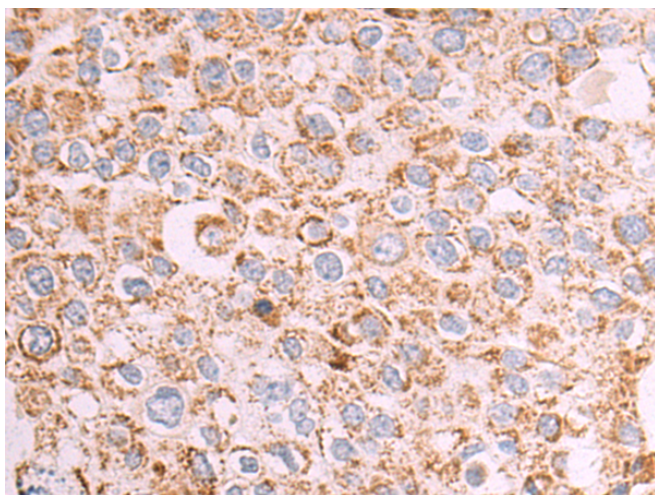
**纯化:** Antigen affinity purification

**种属反应性:** Human

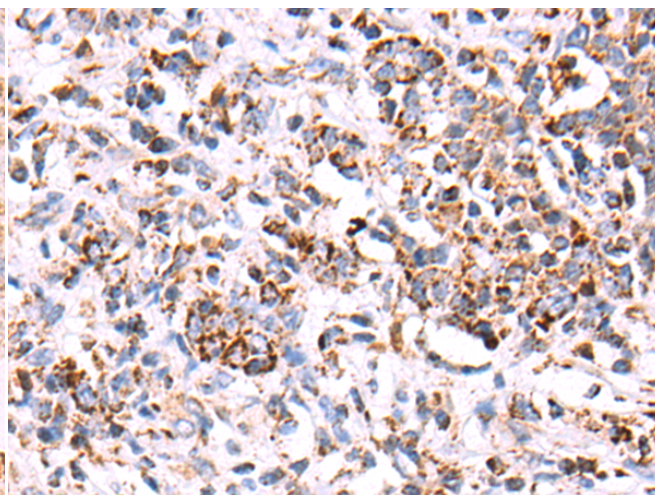
**成分:** PBS (without Mg<sup>2+</sup> and Ca<sup>2+</sup>), pH 7.4, 150 mM NaCl, 0.05% Sodium Azide and 40% glycerol

**研究领域:** Metabolism, Cancer

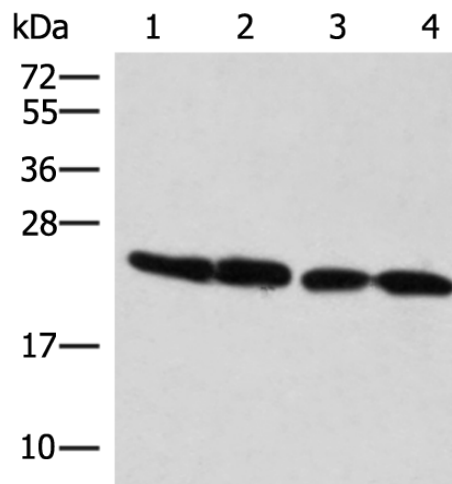
**储存和运输:** Store at -20°C. Avoid repeated freezing and thawing



Immunohistochemistry analysis of paraffin-embedded Human breast cancer tissue using 219604(MT-CO2 Antibody) at a dilution of 1/50(Cytoplasm).



Immunohistochemistry analysis of paraffin-embedded Human gastric cancer tissue using 219604(Anti-MT-CO2 Antibody) at a dilution of 1/50.



Gel: 12%SDS-PAGE, Lysate: 40 µg;  
Lane 1-4: K562, 293T, 231 and A549 cell lysates;  
Primary antibody: 219604(MT-CO2 Antibody) at dilution 1/800;  
Secondary antibody: Goat anti rabbit IgG at 1/8000 dilution;  
Exposure time: 5 seconds



# Product Description

Pioneering GTPase and Oncogene Product Development since 2010

---