

## MSTN RABBIT PAB

货号: S213565

产品全名: MSTN 兔多抗

基因符号: GDF8, MSLHP

**UNIPROT ID:** O14793 (Gene Accession - NP\_005250)

**背景:** The protein encoded by this gene is a member of the bone morphogenetic protein (BMP) family and the TGF-beta superfamily. This group of proteins is characterized by a polybasic proteolytic processing site which is cleaved to produce a mature protein containing seven conserved cysteine residues. The members of this family are regulators of cell growth and differentiation in both embryonic and adult tissues. This gene is thought to encode a secreted protein which negatively regulates skeletal muscle growth.

**抗原:** Synthetic peptide of human MSTN

**经过测试的应用:** ELISA, IHC

**推荐稀释比:** IHC: 20-May; ELISA: 1000-2000

**种属反应性:** Rabbit

**克隆性:** Rabbit Polyclonal

**亚型:** Immunogen-specific rabbit IgG

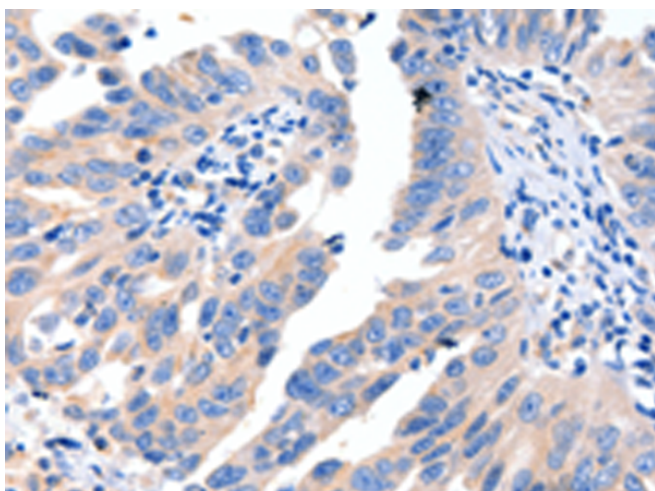
**纯化:** Antigen affinity purification

**种属反应性:** Human, Mouse, Rat

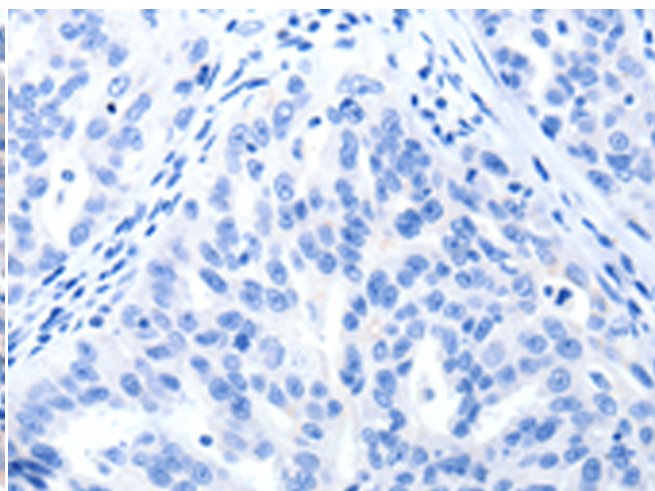
**成分:** PBS (without Mg<sup>2+</sup> and Ca<sup>2+</sup>), pH 7.4, 150 mM NaCl, 0.05% Sodium Azide and 40% glycerol

**研究领域:** Signal Transduction, Cancer, Neuroscience

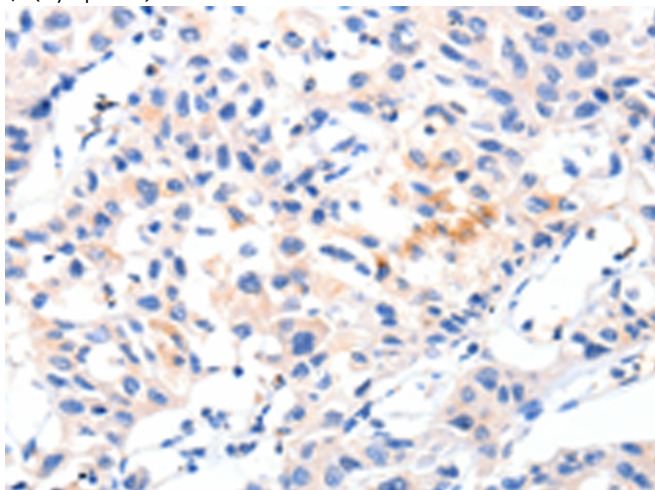
**储存和运输:** Store at -20°C. Avoid repeated freezing and thawing



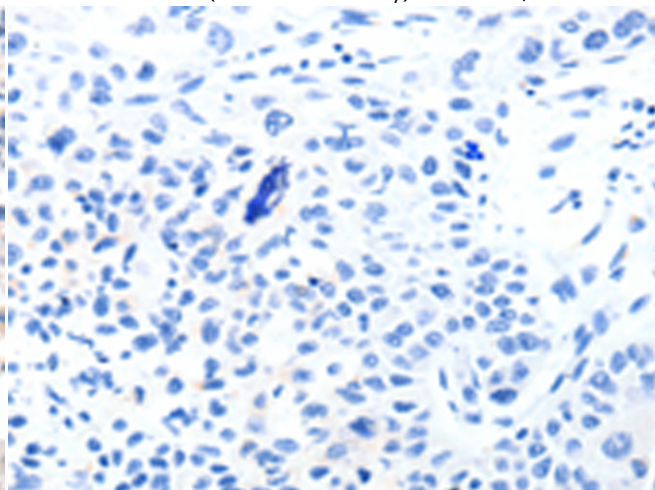
Immunohistochemistry analysis of paraffin embedded Human breast cancer tissue using 213565(MSTN Antibody) at a dilution of 1/8(Cytoplasm).



In comparison with the IHC on the left, the same paraffin-embedded Human breast cancer tissue is first treated with the synthetic peptide and then with 213565(Anti-MSTN Antibody) at dilution 1/8.



The image on the left is immunohistochemistry of paraffin-embedded Human lung cancer tissue using 213565(Anti-MSTN Antibody) at a dilution of 1/8.



In comparison with the IHC on the left, the same paraffin-embedded Human lung cancer tissue is first treated with synthetic peptide and then with D160418(Anti-MSTN Antibody) at dilution 1/8.



# Product Description

Pioneering GTPase and Oncogene Product Development since 2010

---