

MST1 RABBIT MAB

货号: N263117

产品全名: MST1 兔单克隆抗体

基因符号 HGFL; MSP; MST1; NF15S2

UNIPROT ID: P26927

背景: Probably has no proteolytic activity, since crucial characteristic of serine proteases catalytic sites are not conserved.

抗原: A synthetic peptide of human MST1

经过测试的应用: WB,IHC-P

推荐稀释比: WB: 1/500-1/1000 IHC: 1/50-1/100

种属反应性: Rabbit

克隆性: Rabbit Monoclonal

克隆编号: R04-1D6

分子量: Calculated MW: 80 kDa; Observed MW: 96 kDa

亚型: IgG

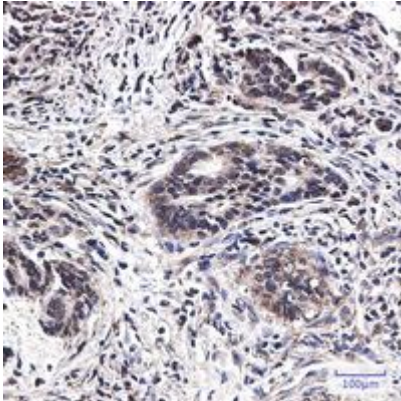
纯化: Affinity Purified

种属反应性: Human, Mouse and Rat

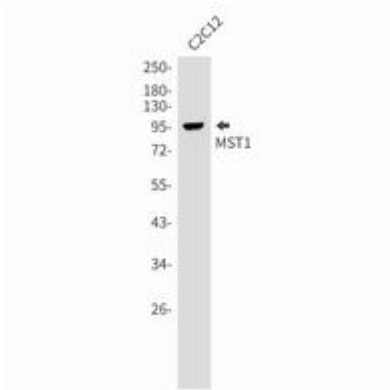
成分: PBS (without Mg²⁺ and Ca²⁺), pH 7.3 containing 50% glycerol, 0.5% BSA and 0.02% sodium azide

研究领域: Cell Biology

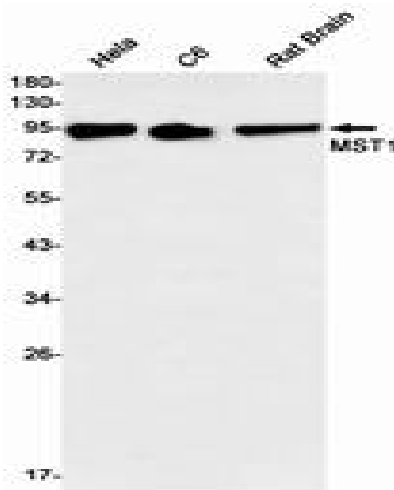
储存和运输: Store at -20°C. Avoid repeated freezing and thawing



Immunohistochemistry analysis of paraffin-embedded Human colon cancer using MST1 antibody. High- pressure and temperature Sodium Citrate pH 6.0 was used for antigen retrieval.



Western blot analysis of MST1 in C2C12 lysates using MST1 antibody.



Western blot analysis of MST1 in HeLa, C6, rat Brain lysates using MST1 antibody.