

MSH6 RABBIT MAB

货号: N263435

产品全名: MSH6 兔单克隆抗体

基因符号 MSH6; GTBP; DNA mismatch repair protein Msh6; hMSH6; G/T mismatch-binding protein; GTBP; GTMBP; MutS-alpha 160 kDa subunit; p160

UNIPROT ID: P52701

背景: The DNA mismatch repair system (MMR) repairs post-replication DNA, inhibits recombination between nonidentical DNA sequences, and induces both checkpoint and apoptotic responses following certain types of DNA damage. MSH2 (MutS homologue 2) forms the hMutS- α dimer with MSH6 and is an essential component of the mismatch repair process.

抗原: A synthetic peptide of human MSH6

经过测试的应用: WB, ICC/IF, IP

推荐稀释比: WB: 1/500-1/1000 IF: 1/50-1/200 IP: 1/20

种属反应性: Rabbit

克隆性: Rabbit Monoclonal

克隆编号: R02-6G6

分子量: Calculated MW: 153 kDa; Observed MW: 163 kDa

亚型: IgG

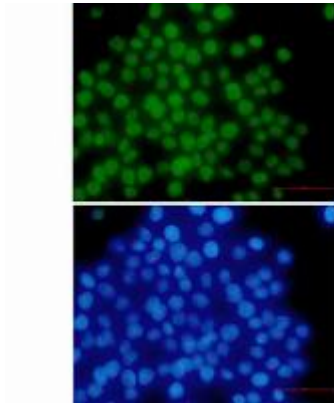
纯化: Affinity Purified

种属反应性: Human, Mouse

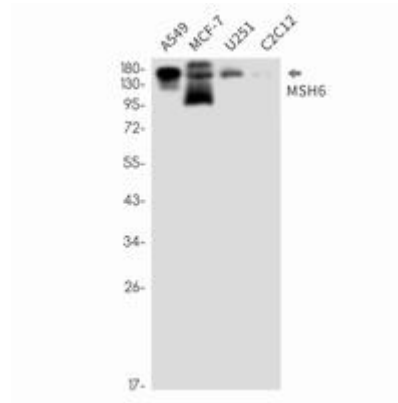
成分: PBS (without Mg²⁺ and Ca²⁺), pH 7.3 containing 50% glycerol, 0.5% BSA and 0.02% sodium azide

研究领域: Epigenetics and Nuclear Signaling

储存和运输: Store at -20°C. Avoid repeated freezing and thawing



Immunocytochemistry analysis of MSH6 (green) in HeLa using MSH6 antibody, and DAPI (blue)



Western blot analysis of MSH6 in A549, MCF-7, U251, C2C12 lysates using MSH6 antibody.