

MS2 RABBIT MAB

货号: N262537

产品全名: MS2 兔单克隆抗体

基因符号 MS2; CD156; CD156a

UNIPROT ID: P78325

背景: Possible involvement in extravasation of leukocytes.

抗原: A synthetic peptide of MS2

经过测试的应用: WB,IP

推荐稀释比: WB: 1/500-1/1000 IP: 1/20

种属反应性: Rabbit

克隆性: Rabbit Monoclonal

克隆编号: R07-8D8

分子量: Calculated MW: 89 kDa; Observed MW: 89 kDa

亚型: IgG

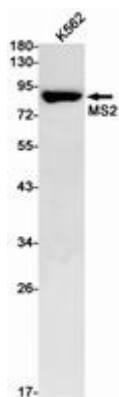
纯化: Affinity Purified

种属反应性: Human,Mouse

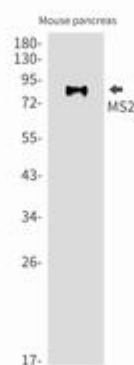
成分: PBS (without Mg²⁺ and Ca²⁺), pH 7.3 containing 50% glycerol, 0.5% BSA and 0.02% sodium azide

研究领域: Cell Biology

储存和运输: Store at -20°C. Avoid repeated freezing and thawing



Western blot analysis of MS2 in K562 lysates using MS2 antibody.



Western blot analysis of MS2 in mouse pancreas lysates using MS2 antibody.