

MRPS26 RABBIT MAB

货号: N262535

产品全名: MRPS26 兔单克隆抗体

基因符号 GI008; MRPS13; RPMS13; MRP-S13; MRP-S26; NY-BR-87;
C20orf193; dJ534B8.3

UNIPROT ID: Q9BYN8

背景: Mammalian mitochondrial ribosomal proteins are encoded by nuclear genes and help in protein synthesis within the mitochondrion. Mitochondrial ribosomes (mitoribosomes) consist of a small 28S subunit and a large 39S subunit.

抗原: Recombinant protein of human MRPS26

经过测试的应用: WB, ICC/IF

推荐稀释比: WB: 1/500-1/1000 IF: 1/50-1/200

种属反应性: Rabbit

克隆性: Rabbit Monoclonal

克隆编号: R01-2D6

分子量: Calculated MW: 24 kDa; Observed MW: 24 kDa

亚型: IgG

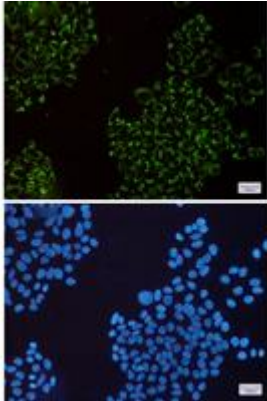
纯化: Affinity Purified

种属反应性: Human

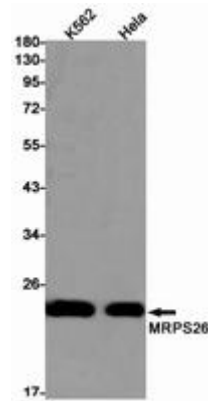
成分: PBS (without Mg²⁺ and Ca²⁺), pH 7.3 containing 50% glycerol, 0.5% BSA and 0.02% sodium azide

研究领域: Tags & Cell Markers

储存和运输: Store at -20°C. Avoid repeated freezing and thawing



Immunocytochemistry analysis of MRPS26 (green) in HeLa using MRPS26 antibody, and DAPI (blue)



Western blot analysis of MRPS26 in K562, HeLa lysates using MRPS26 antibody.