

MRPL35 RABBIT PAB

货号: N225132

产品全名: MRPL35 兔多抗

基因符号 MRPL35; BM-007; 39S ribosomal protein L35; mitochondrial; L35mt; MRP-L35

UNIPROT ID: Q9NZE8

背景: Mammalian mitochondrial ribosomal proteins are encoded by nuclear genes and help in protein synthesis within the mitochondrion. Mitochondrial ribosomes (mitoribosomes) consist of a small 28S subunit and a large 39S subunit.

抗原: Synthesized peptide derived from MRP-L35 . at AA range: 80-160

经过测试的应用: WB,ELISA

推荐稀释比: WB: 1/500-1/1000 ELISA: 1/10000

种属反应性: Rabbit

克隆性: Rabbit Polyclonal

分子量: Calculated MW: 22 kDa; Observed MW: 22 kDa

亚型: IgG

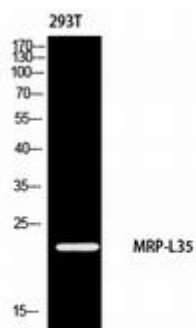
纯化: Affinity Purified

种属反应性: Human,Mouse

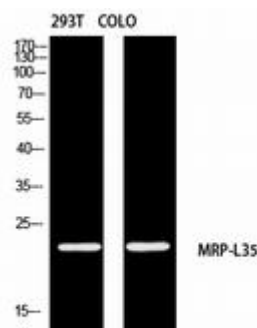
成分: PBS (without Mg²⁺ and Ca²⁺), pH 7.3 containing 50% glycerol, 0.5% BSA and 0.02% sodium azide

研究领域: Tags & Cell Markers

储存和运输: Store at -20°C. Avoid repeated freezing and thawing



Western blot analysis of MRPL35 in 293 lysates using MRPL35 antibody.



Western blot analysis of MRPL35 in 293T , COLO lysates using MRPL35 antibody.



Product Description

Pioneering GTPase and Oncogene Product Development since 2010
