

MRPL16 RABBIT PAB

货号: S219036

产品全名: MRPL16 兔多抗

基因符号 L16mt; MRP-L16; PNAS-III

UNIPROT ID: Q9NX20 (Gene Accession - BC001040)

背景: Mammalian mitochondrial ribosomal proteins are encoded by nuclear genes and help in protein synthesis within the mitochondrion. Mitochondrial ribosomes (mitoribosomes) consist of a small 28S subunit and a large 39S subunit. They have an estimated 75% protein to rRNA composition compared to prokaryotic ribosomes, where this ratio is reversed. Another difference between mammalian mitoribosomes and prokaryotic ribosomes is that the latter contain a 5S rRNA. Among different species, the proteins comprising the mitoribosome differ greatly in sequence, and sometimes in biochemical properties, which prevents easy recognition by sequence homology. This gene encodes a 39S subunit protein.

抗原: Fusion protein of human MRPL16

经过测试的应用: ELISA, WB, IHC

推荐稀释比: IHC: 50-300; WB: 1000-5000; ELISA: 5000-10000

种属反应性: Rabbit

克隆性: Rabbit Polyclonal

亚型: Immunogen-specific rabbit IgG

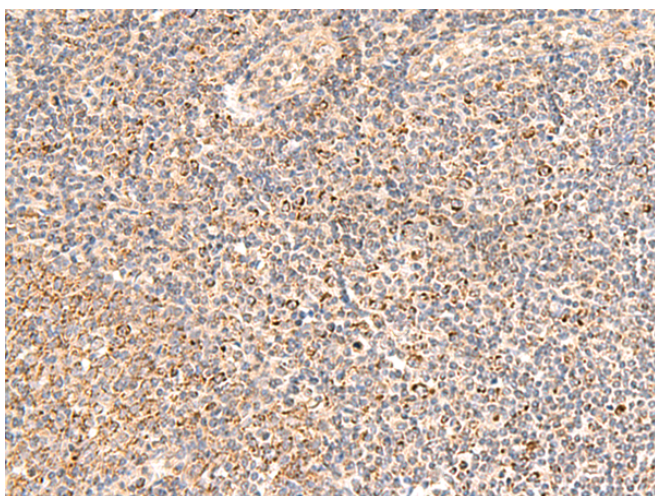
纯化: Antigen affinity purification

种属反应性: Human, Mouse, Rat

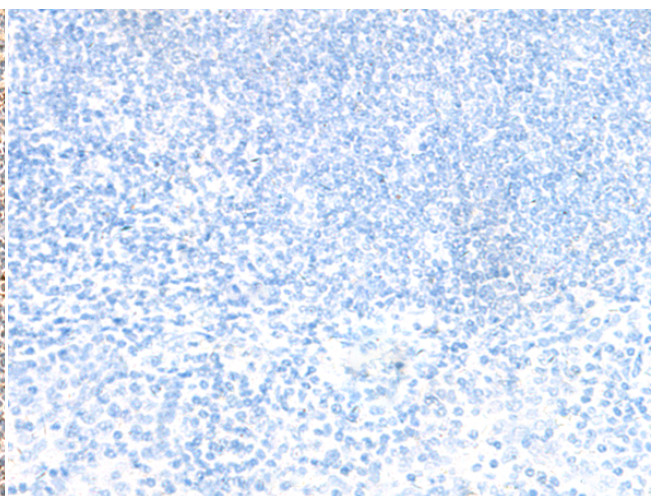
成分: PBS (without Mg²⁺ and Ca²⁺), pH 7.4, 150 mM NaCl, 0.05% Sodium Azide and 40% glycerol

研究领域: Epigenetics and Nuclear Signaling

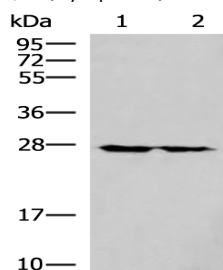
储存和运输: Store at -20°C. Avoid repeated freezing and thawing



Immunohistochemistry analysis of paraffin embedded Human tonsil tissue using 219036(MRPL16 Antibody) at a dilution of 1/50(Cytoplasm).



In comparison with the IHC on the left, the same paraffin-embedded Human tonsil tissue is first treated with the fusion protein and then with 219036(Anti-MRPL16 Antibody) at dilution 1/50.



Gel: 12%SDS-PAGE, Lysate: 40 µg;

Lane 1-2: HT-29 and 293T cell lysates;

Primary antibody: 219036(MRPL16 Antibody) at dilution 1/800;

Secondary antibody: HRP-conjugated Goat anti rabbit IgG at 1/5000 dilution;

Exposure time: 40 seconds



Product Description

Pioneering GTPase and Oncogene Product Development since 2010
