

MPPED2 RABBIT PAB

货号: S218629

产品全名: MPPED2 兔多抗

基因符号: 239FB; C11orf8

UNIPROT ID: Q15777 (Gene Accession - BC031582)

背景: This gene likely encodes a metallophosphoesterase. The encoded protein may play a role a brain development. Alternatively spliced transcript variants have been described.

抗原: Full length fusion 蛋白

经过测试的应用: ELISA, IHC

推荐稀释比: IHC: 30-150; ELISA: 5000-10000

种属反应性: Rabbit

克隆性: Rabbit Polyclonal

亚型: Immunogen-specific rabbit IgG

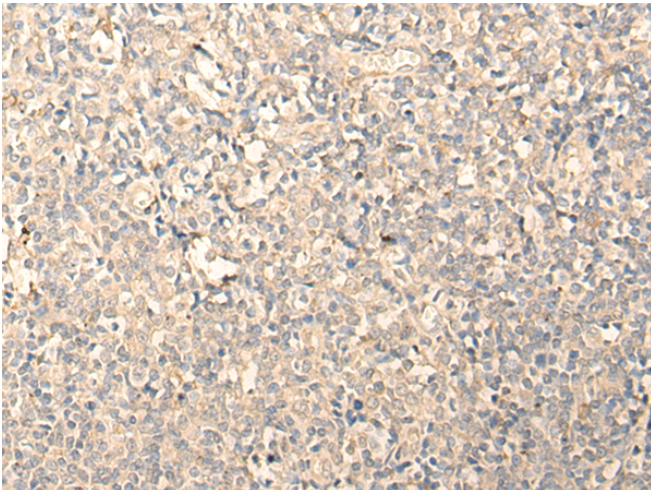
纯化: Antigen affinity purification

种属反应性: Human, Mouse, Rat

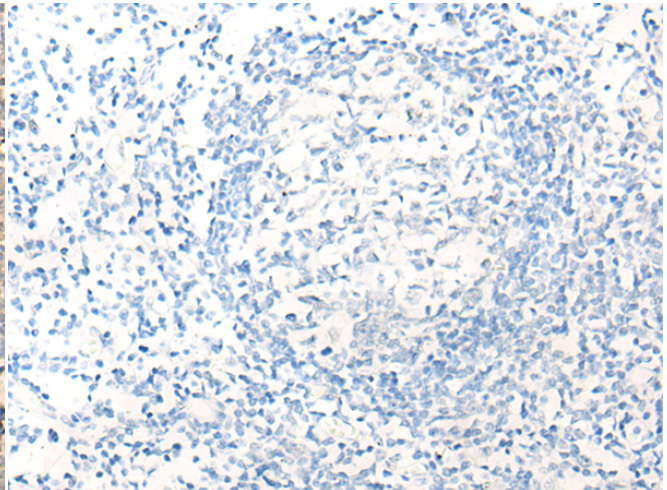
成分: PBS (without Mg²⁺ and Ca²⁺), pH 7.4, 150 mM NaCl, 0.05% Sodium Azide and 40% glycerol

研究领域: Neuroscience

储存和运输: Store at -20°C. Avoid repeated freezing and thawing



Immunohistochemistry analysis of paraffin embedded Human tonsil tissue using 218629(MPPED2 Antibody) at a dilution of 1/25(Cytoplasm and Cell membrane).



In comparison with the IHC on the left, the same paraffin-embedded Human tonsil tissue is first treated with the fusion protein and then with 218629(Anti-MPPED2 Antibody) at dilution 1/25.