

MPG RABBIT PAB

货号: S210950

产品全名: MPG 兔多抗

基因符号 AAG; MDG; ADPG; APNG; Midl; anpg; PIG11; PIG16; CRA36.1

UNIPROT ID: P29372 (Gene Accession - BC014991)

背景: Predicted to enable alkylbase DNA N-glycosylase activity. Predicted to be involved in base-excision repair. Located in cytosol and nucleoplasm.

抗原: Fusion protein of human MPG

经过测试的应用: ELISA, WB, IHC

推荐稀释比: IHC: 100-300;WB: 1000-5000;ELISA: 5000-10000

种属反应性: Rabbit

克隆性: Rabbit Polyclonal

亚型: Immunogen-specific rabbit IgG

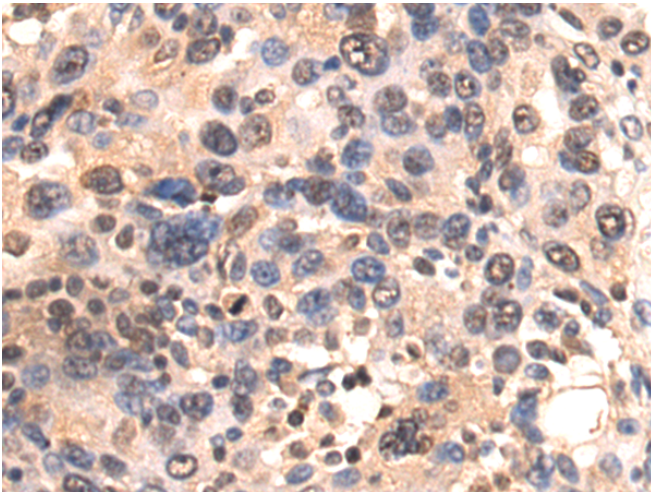
纯化: Antigen affinity purification

种属反应性: Human

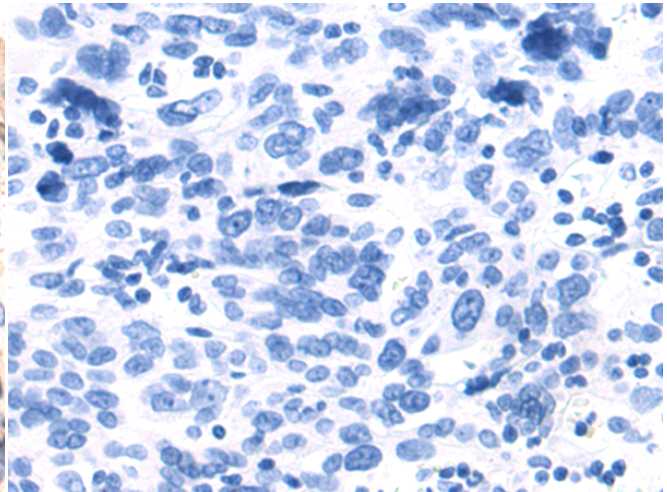
成分: PBS (without Mg²⁺ and Ca²⁺), pH 7.4, 150 mM NaCl, 0.05% Sodium Azide and 40% glycerol

研究领域: Epigenetics and Nuclear Signaling

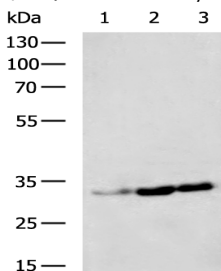
储存和运输: Store at -20°C. Avoid repeated freezing and thawing



Immunohistochemistry analysis of paraffin embedded Human breast cancer tissue using 210950 (MPG Antibody) at a dilution of 1/120 (Nucleus and Cytoplasm).



In comparison with the IHC on the left, the same paraffin-embedded Human breast cancer tissue is first treated with the fusion protein and then with 210950 (Anti-MPG Antibody) at dilution 1/120.



Gel: 8%SDS-PAGE, Lysate: 40 µg;

Lane 1-3: HepG2, LOVO, 293T cell lysates;

Primary antibody: 210950 (MPG Antibody) at dilution 1/1350;

Secondary antibody: HRP-conjugated Goat anti rabbit IgG at 1/5000 dilution;

Exposure time: 20 seconds