

MORC2 RABBIT PAB

货号: S218039

产品全名: MORC2 兔多抗

基因符号 ZCW3; ZCWCC1

UNIPROT ID: Q9Y6X9 (Gene Accession - BC019257)

背景: The CW domain is a structural module found in many vertebrate, parasitic and plant proteins. It consists of a mononuclear four-cysteine zinc-finger domain that plays a role in DNA binding, chromatin methylation and early embryonic development. ZCWCC1 (zinc finger CW-type coiled-coil domain protein 1), also known as MORC2 (MORC family CW-type zinc finger protein 2) or ZCW3, is a 1,032 amino acid protein that contains one CW-type zinc finger domain. ZCWCC1 is located on chromosome 22 and is ubiquitously expressed with highest expression in pancreas, smooth muscle and testis. Expression of ZCWCC1 is upregulated in hypoxia, a pathological condition characterized by an inadequate supply of oxygen in the blood.

抗原: Fusion protein of human MORC2

经过测试的应用: ELISA, WB, IHC

推荐稀释比: IHC: 25-100;WB: 500-2000;ELISA: 5000-10000

种属反应性: Rabbit

克隆性: Rabbit Polyclonal

亚型: Immunogen-specific rabbit IgG

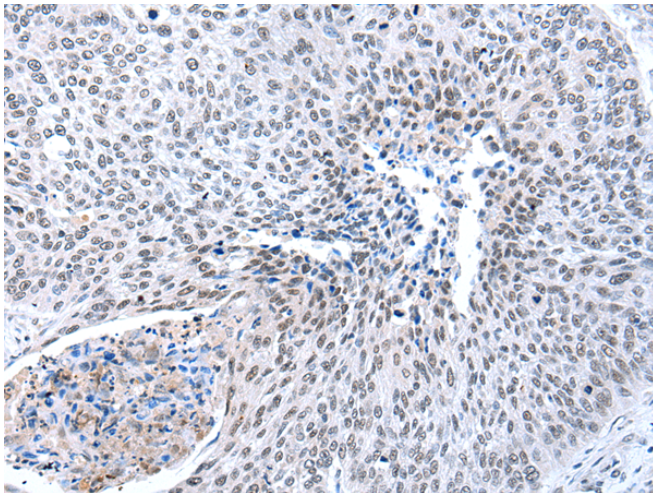
纯化: Antigen affinity purification

种属反应性: Human

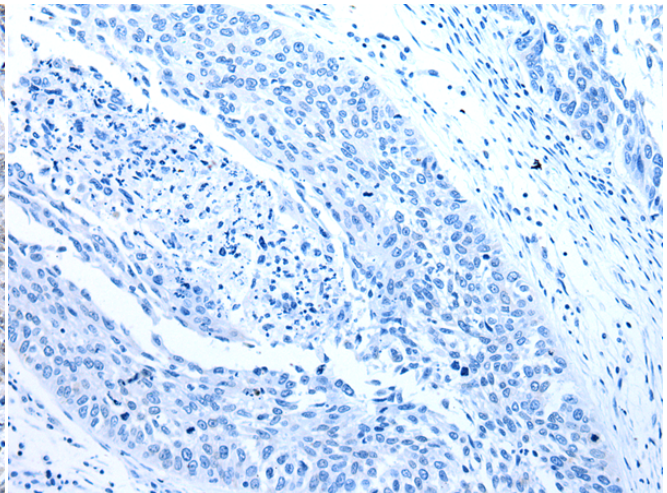
成分: PBS (without Mg²⁺ and Ca²⁺), pH 7.4, 150 mM NaCl, 0.05% Sodium Azide and 40% glycerol

研究领域: Epigenetics and Nuclear Signaling

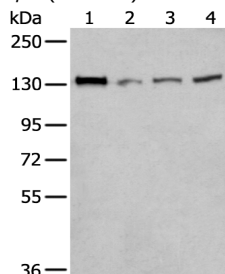
储存和运输: Store at -20°C. Avoid repeated freezing and thawing



Immunohistochemistry analysis of paraffin embedded Human lung cancer tissue using 218039 (MORC2 Antibody) at a dilution of 1/25 (Nucleus).



In comparison with the IHC on the left, the same paraffin-embedded Human lung cancer tissue is first treated with the fusion protein and then with 218039 (Anti-MORC2 Antibody) at dilution 1/25.



Gel: 6%SDS-PAGE, Lysate: 40 µg;

Lane 1-4: 231, 293T, HeLa and A172 cell lysates;

Primary antibody: 218039 (MORC2 Antibody) at dilution 1/300;

Secondary antibody: Goat anti rabbit IgG at 1/8000 dilution;

Exposure time: 20 seconds