

MONOMETHYL-HISTONE H3 (LYS36) RABBIT PAB

货号: N225629

产品全名: MonoMethyl-Histone H3 (Lys36) 兔多抗

基因符号 H3K36me; H3/j; H3C1; H3C2; H3C3; H3C4; H3C6; H3C7; H3C8; H3FJ; H3C10; H3C11; HIST1H3J

UNIPROT ID: P68431

背景: H3 Core component of nucleosome. Nucleosomes wrap and compact DNA into chromatin, limiting DNA accessibility to the cellular machineries which require DNA as a template. Histones thereby play a central role in transcription regulation, DNA repair, DNA replication and chromosomal stability.

抗原: A synthesized peptide derived from human Histone H3 (mono methyl K36)

经过测试的应用: WB, ICC/IF

推荐稀释比: WB: 1/500-1/1000 IF: 1/50-1/200

种属反应性: Rabbit

克隆性: Rabbit Polyclonal

分子量: Calculated MW: 15 kDa; Observed MW: 15 kDa

亚型: IgG

纯化: Affinity Chromatography

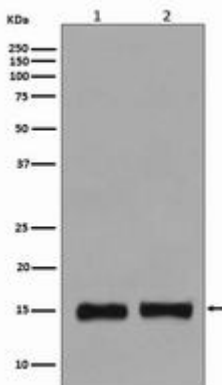
种属反应性: Human, Mouse

Modification: Methylated

成分: PBS (without Mg²⁺ and Ca²⁺), pH 7.3 containing 50% glycerol, 0.5% BSA and 0.02% sodium azide

研究领域: Epigenetics and Nuclear Signaling

储存和运输: Store at -20°C. Avoid repeated freezing and thawing



Western blot analysis of Histone H3 (mono methyl K36) in (1) HeLa lysates; (2) NIH/3T3 lysates using MonoMethyl-Histone H3 (Lys36) antibody.



Product Description

Pioneering GTPase and Oncogene Product Development since 2010
