

MOGS RABBIT PAB

货号: S222074

产品全名: MOGS 兔多抗

基因符号: DER7; GCSI; CDG2B; CWH41

UNIPROT ID: Q13724 (Gene Accession - NP_006293)

背景: This gene encodes the first enzyme in the N-linked oligosaccharide processing pathway. The enzyme cleaves the distal alpha-1,2-linked glucose residue from the Glc(3)-Man(9)-GlcNAc(2) oligosaccharide precursor. This protein is located in the lumen of the endoplasmic reticulum. Defects in this gene are a cause of type IIb congenital disorder of glycosylation (CDGIIb). Two transcript variants encoding different isoforms have been found for this gene.

抗原: Synthetic peptide of human MOGS

经过测试的应用: ELISA, IHC

推荐稀释比: IHC: 50-200; ELISA: 5000-10000

种属反应性: Rabbit

克隆性: Rabbit Polyclonal

亚型: Immunogen-specific rabbit IgG

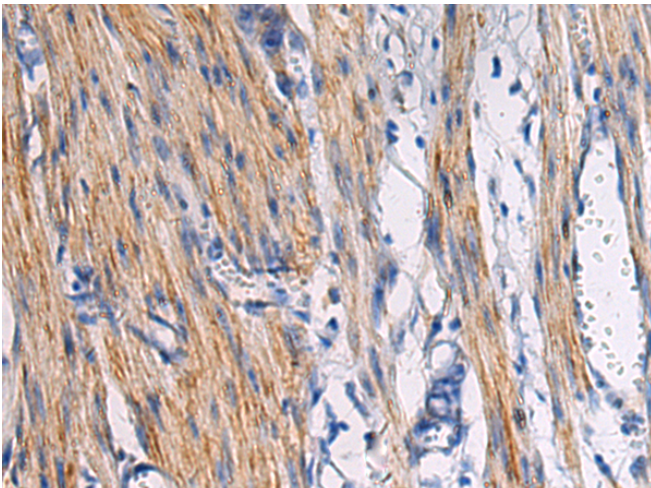
纯化: Antigen affinity purification

种属反应性: Human

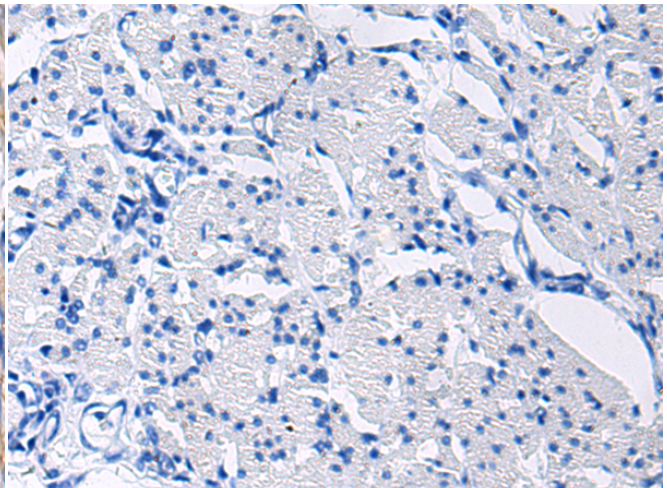
成分: PBS (without Mg²⁺ and Ca²⁺), pH 7.4, 150 mM NaCl, 0.05% Sodium Azide and 40% glycerol

研究领域: Cell Biology

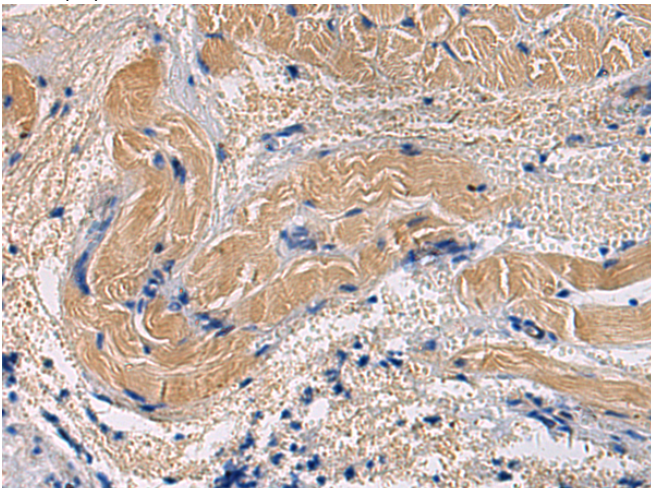
储存和运输: Store at -20°C. Avoid repeated freezing and thawing



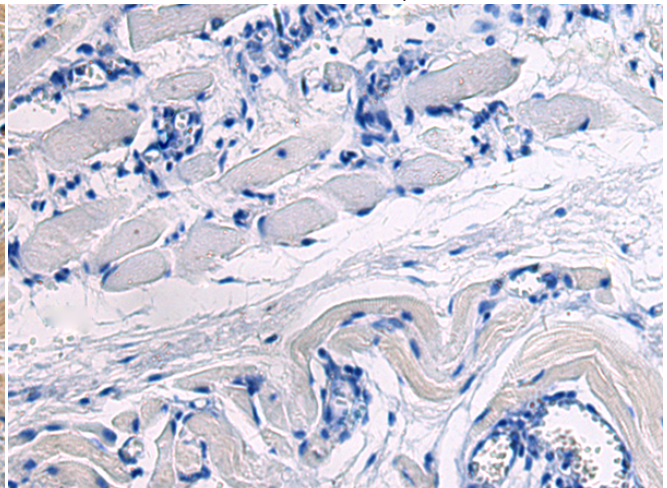
Immunohistochemistry analysis of paraffin embedded Human esophagus cancer using 222074(MOGS Antibody) at a dilution of 1/40(Cytoplasm).



In comparison with the IHC on the left, the same paraffin-embedded Human esophagus cancer is first treated with the synthetic peptide and then with 222074(Anti-MOGS Antibody) at dilution 1/40.



The image on the left is immunohistochemistry of paraffin-embedded Human tonsil using 222074(Anti-MOGS Antibody) at a dilution of 1/40.



In comparison with the IHC on the left, the same paraffin-embedded Human tonsil is first treated with synthetic peptide and then with D263979(Anti-MOGS Antibody) at dilution 1/40.



Product Description

Pioneering GTPase and Oncogene Product Development since 2010
