

MOG RABBIT MAB

货号: N262559

产品全名: MOG 兔单克隆抗体

基因符号: BTN6; BTNL11; MOGIG2; NRCLP7

UNIPROT ID: Q16653

背景: Mediates homophilic cell-cell adhesion (By similarity). Minor component of the myelin sheath. May be involved in completion and/or maintenance of the myelin sheath and in cell-cell communication.

抗原: A synthetic peptide of human Myelin oligodendrocyte glycoprotein

经过测试的应用: WB, ICC/IF

推荐稀释比: WB: 1/500-1/1000 IF: 1/50-1/200

种属反应性: Rabbit

克隆性: Rabbit Monoclonal

克隆编号: R04-4K8

分子量: Calculated MW: 28 kDa; Observed MW: 28 kDa

亚型: IgG

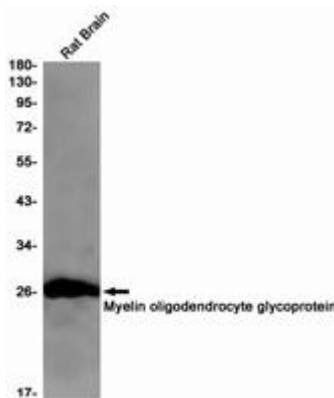
纯化: Affinity Purified

种属反应性: Rat

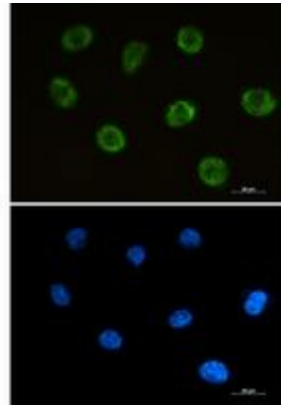
成分: PBS (without Mg²⁺ and Ca²⁺), pH 7.3 containing 50% glycerol, 0.5% BSA and 0.02% sodium azide

研究领域: Neuroscience

储存和运输: Store at -20°C. Avoid repeated freezing and thawing



Western blot analysis of Myelin oligodendrocyte glycoprotein in rat Brain lysates using Myelin oligodendrocyte glycoprotein antibody.



Immunocytochemistry analysis of MOG (green) in SH-SY5Y using MOG antibody, and DAPI (blue).