

## MOB2 RABBIT PAB

货号: S222160

产品全名: MOB2 兔多抗

基因符号: HCCA2

**UNIPROT ID:** Q70IA6 (Gene Accession - NP\_443731)

**背景:** MOB2 (Mps one binder kinase activator-like 2), also known as HCCA2 (Hepatocellular carcinoma-associated gene 2), is a 467 amino acid protein that belongs to the MOB1/phocein family. MOB2 is expressed in lung, spleen, brain, and fetal liver. It is highly expressed in hepatocellular carcinoma. MOB2 is localized in the perinuclear region of the cytoplasm in liver cancer tissues and colocalizes with MAD2L2 in the nucleus of Hela cells. MOB2 is characterized by two N-glycosylation sites, six N-myristoylation sites, two Src homology 3 (SH3), and several phosphorylation motifs which indicate that this protein may play a role in an intracellular signal transduction cascade. MOB2 binds to and regulates the autophosphorylation of the related human serine/threonine kinase 38 (NDR1) and serine/threonine kinase 38L (NDR2). It has been shown that MOB2 plays a critical role in cell cycle regulation. Overexpression of the protein during the G0/G1 phase inhibits cell proliferation causing cell cycle arrest. Stimulates the autophosphorylation and kinase activity of STK38 and STK38L.

**抗原:** Synthetic peptide of human MOB2

**经过测试的应用:** ELISA, IHC

**推荐稀释比:** IHC: 40-200; ELISA: 5000-10000

**种属反应性:** Rabbit

**克隆性:** Rabbit Polyclonal

**亚型:** Immunogen-specific rabbit IgG

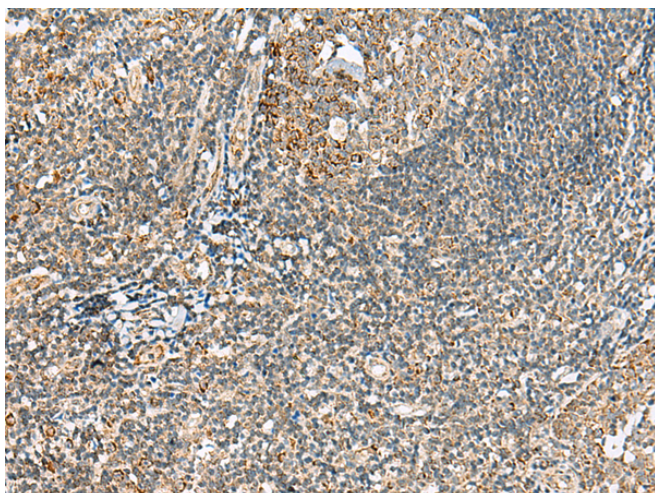
**纯化:** Antigen affinity purification

**种属反应性:** Human, Mouse

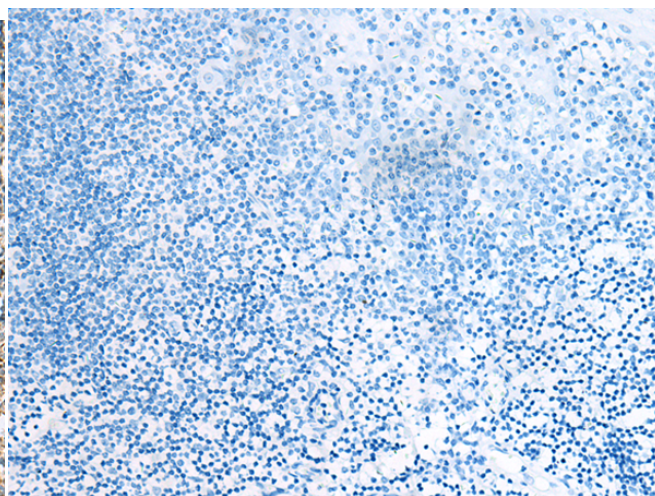
**成分:** PBS (without Mg<sup>2+</sup> and Ca<sup>2+</sup>), pH 7.4, 150 mM NaCl, 0.05% Sodium Azide and 40% glycerol

**研究领域:** Signal Transduction, Cancer

**储存和运输:** Store at -20°C. Avoid repeated freezing and thawing



Immunohistochemistry analysis of paraffin embedded Human tonsil tissue using 222160(MOB2 Antibody) at a dilution of 1/40(Cytoplasm).



In comparison with the IHC on the left, the same paraffin-embedded Human tonsil tissue is first treated with the synthetic peptide and then with 222160(Anti-MOB2 Antibody) at dilution 1/40.