

MOB1A RABBIT PAB

货号: S219017

产品全名: MOB1A 兔多抗

基因符号: MOB1; MATS1; Mob4B; C2orf6; MOBK1B; MOBKL1B

UNIPROT ID: Q9H8S9 (Gene Accession - BC003398)

背景: The protein encoded by this gene is a component of the Hippo signaling pathway, which controls organ size and tumor growth by enhancing apoptosis. Loss of the encoded protein results in cell proliferation and cancer formation. The encoded protein is also involved in the control of microtubule stability during cytokinesis. Several transcript variants encoding different isoforms have been found for this gene.

抗原: Fusion protein of human MOB1A

经过测试的应用: ELISA, IHC

推荐稀释比: IHC: 50-300; ELISA: 5000-10000

种属反应性: Rabbit

克隆性: Rabbit Polyclonal

亚型: Immunogen-specific rabbit IgG

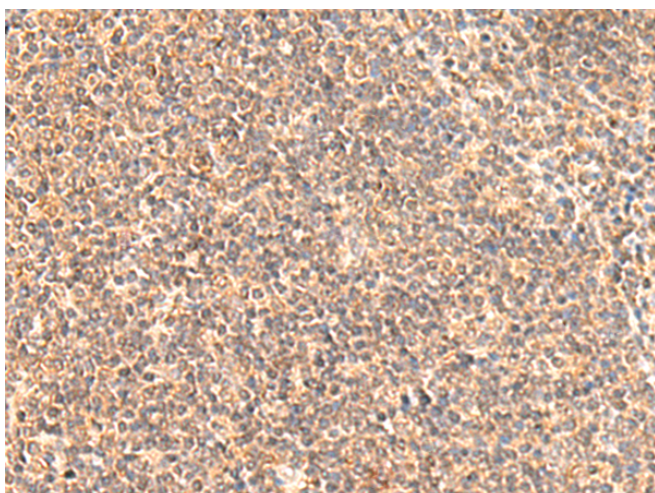
纯化: Antigen affinity purification

种属反应性: Human, Mouse, Rat

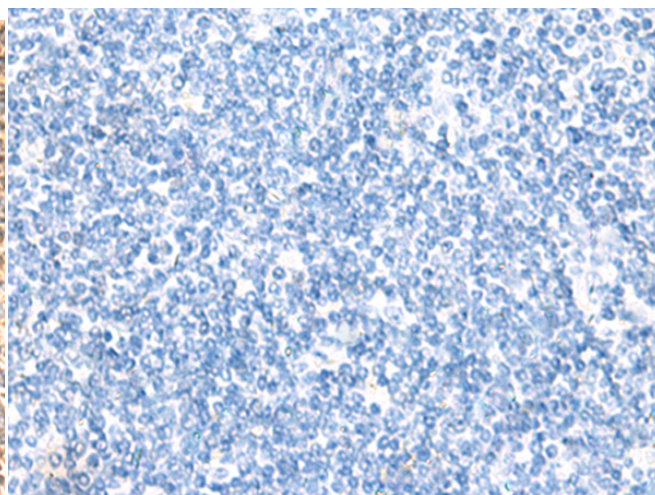
成分: PBS (without Mg²⁺ and Ca²⁺), pH 7.4, 150 mM NaCl, 0.05% Sodium Azide and 40% glycerol

研究领域: Signal Transduction, Cancer

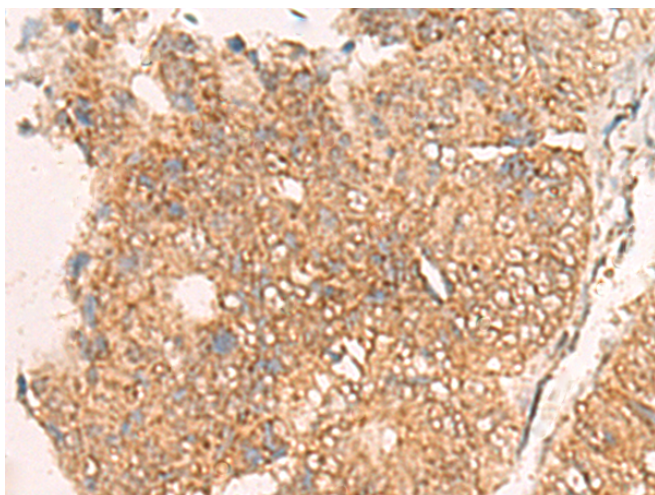
储存和运输: Store at -20°C. Avoid repeated freezing and thawing



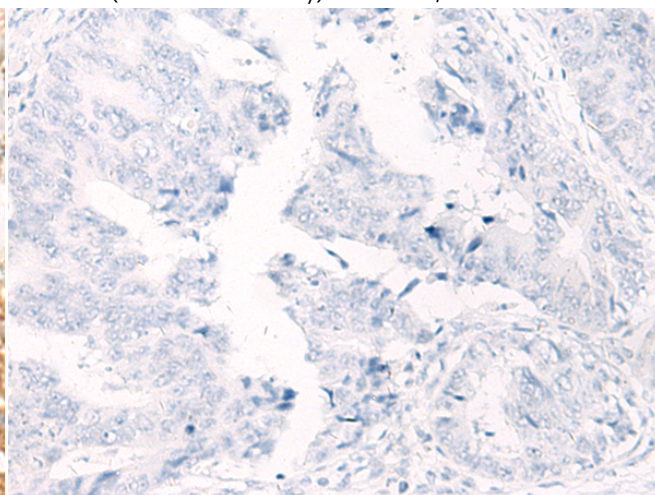
Immunohistochemistry analysis of paraffin embedded Human tonsil tissue using 219017(MOB1A Antibody) at a dilution of 1/50(Cytoplasm).



In comparison with the IHC on the left, the same paraffin-embedded Human tonsil tissue is first treated with the fusion protein and then with 219017(Anti-MOB1A Antibody) at dilution 1/50.



The image on the left is immunohistochemistry of paraffin-embedded Human colorectal cancer tissue using 219017(Anti-MOB1A Antibody) at a dilution of 1/50.



In comparison with the IHC on the left, the same paraffin-embedded Human colorectal cancer tissue is first treated with fusion protein and then with D225657(Anti-MOB1A Antibody) at dilution 1/50.



Product Description

Pioneering GTPase and Oncogene Product Development since 2010
