

MMP3 RABBIT PAB

货号: S216267

产品全名: MMP3 兔多抗

基因符号 SL-1, STMY, STR1, CHDS6, MMP-3, STMY1

UNIPROT ID: P08254 (Gene Accession - BC069676)

背景: Proteins of the matrix metalloproteinase (MMP) family are involved in the breakdown of extracellular matrix in normal physiological processes, such as embryonic development, reproduction, and tissue remodeling, as well as in disease processes, such as arthritis and metastasis. Most MMP's are secreted as inactive proproteins which are activated when cleaved by extracellular proteinases. This gene encodes an enzyme which degrades fibronectin, laminin, collagens III, IV, I, α and α and cartilage proteoglycans. The enzyme is thought to be involved in wound repair, progression of atherosclerosis, and tumor initiation. The gene is part of a cluster of MMP genes which localize to chromosome 11q22.3.

抗原: Fusion protein of human MMP3

经过测试的应用: ELISA, IHC

推荐稀释比: IHC: 25-100; ELISA: 500-5000

种属反应性: Rabbit

克隆性: Rabbit Polyclonal

亚型: Immunogen-specific rabbit IgG

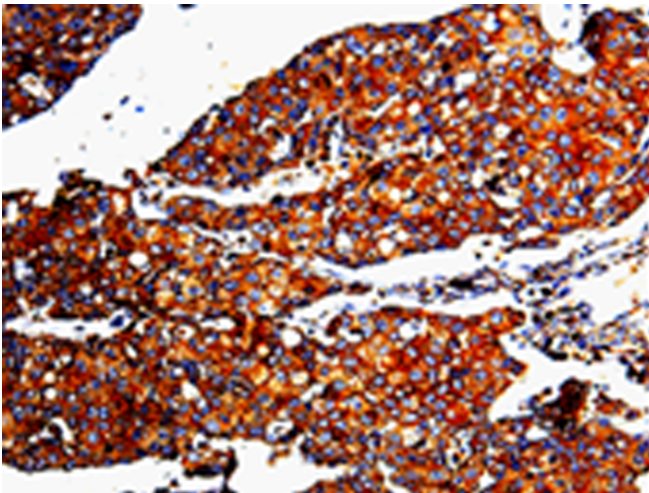
纯化: Antigen affinity purification

种属反应性: Human

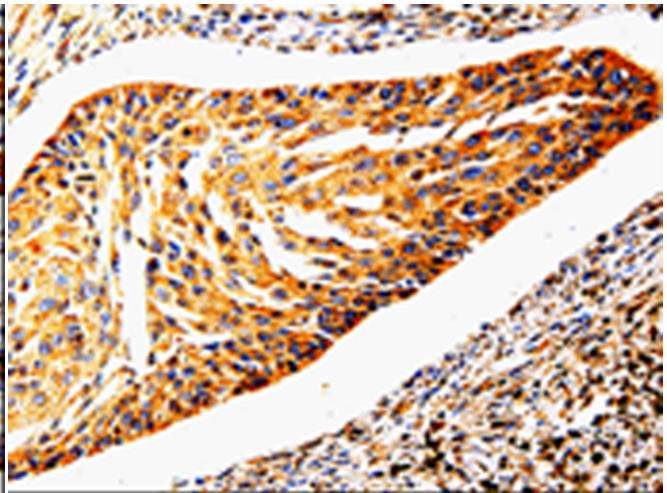
成分: PBS (without Mg²⁺ and Ca²⁺), pH 7.4, 150 mM NaCl, 0.05% Sodium Azide and 40% glycerol

研究领域: Signal Transduction, Cardiovascular, Cancer, Cell Biology

储存和运输: Store at -20°C. Avoid repeated freezing and thawing



Immunohistochemistry analysis of paraffin-embedded Human breast cancer tissue using 216267(MMP3 Antibody) at a dilution of 1/10(Cytoplasm).



Immunohistochemistry analysis of paraffin-embedded Human cervical cancer tissue using 216267(Anti-MMP3 Antibody) at a dilution of 1/10.