

MMP3 RABBIT PAB

货号: N225371

产品全名: MMP3 兔多抗

基因符号 MMP3; STMY1; Stromelysin-1; SL-1; Matrix metalloproteinase-3; MMP-3; Transin-1

UNIPROT ID: P08254

背景: MMP3 Can degrade fibronectin, laminin, gelatins of type I, III, IV, and V; collagens III, IV, X, and IX, and cartilage proteoglycans. Activates procollagenase. Belongs to the peptidase M10A family.

抗原: The antiserum was produced against synthesized peptide derived from human MMP-3. AA range:421-470

经过测试的应用: WB,IHC-F,IHC-P,ICC/IF,ELISA

推荐稀释比: WB: 1/500-1/1000 IHC: 1/50-1/100 IF: 1/50-1/200 ELISA: 1/10000

种属反应性: Rabbit

克隆性: Rabbit Polyclonal

分子量: Calculated MW: 54 kDa; Observed MW: 54 kDa

亚型: IgG

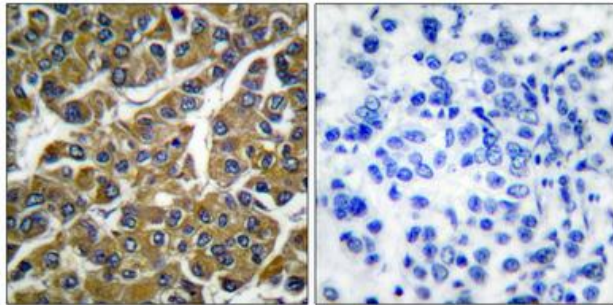
纯化: Affinity Chromatography

种属反应性: Human, Mouse and Rat

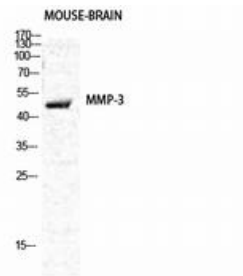
成分: PBS (without Mg²⁺ and Ca²⁺), pH 7.3 containing 50% glycerol, 0.5% BSA and 0.02% sodium azide

研究领域: Cardiovascular

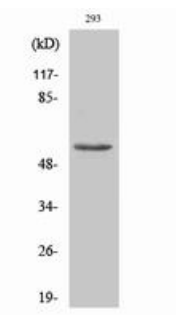
储存和运输: Store at -20°C. Avoid repeated freezing and thawing



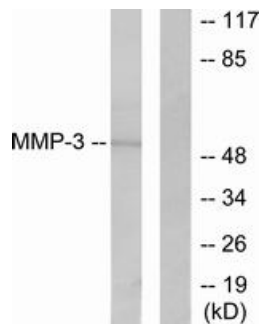
Immunohistochemistry analysis of paraffin-embedded Human breast carcinoma tissue using MMP3 antibody. High-pressure and temperature Sodium Citrate pH 6.0 was used for antigen retrieval. Sample with blocking peptide on the right.



Western blot analysis of MMP3 in various lysates using MMP3 antibody.



Western blot analysis of MMP3 in 293 lysates using MMP3 antibody.



Western blot analysis of MMP3 in 293 lysates using MMP3 antibody. The lane on the right is blocked with the synthesized peptide.