

MMP28 RABBIT PAB

货号: S216652

产品全名: MMP28 兔多抗

基因符号: MM28; MMP25; MMP-25; MMP-28; EPILYSIN

UNIPROT ID: Q9H239 (Gene Accession - BC002631)

背景: Proteins of the matrix metalloproteinase (MMP) family are involved in the breakdown of extracellular matrix for both normal physiological processes, such as embryonic development, reproduction and tissue remodeling, and disease processes, such as asthma and metastasis. This gene encodes a secreted enzyme that degrades casein. Its expression pattern suggests that it plays a role in tissue homeostasis and in wound repair. Alternative splicing of this gene results in multiple transcript variants. [provided by RefSeq, Apr 2014]

抗原: Fusion protein of human MMP28

经过测试的应用: ELISA, WB, IHC

推荐稀释比: IHC: 50-100;WB: 200-1000;ELISA: 2000-5000

种属反应性: Rabbit

克隆性: Rabbit Polyclonal

亚型: Immunogen-specific rabbit IgG

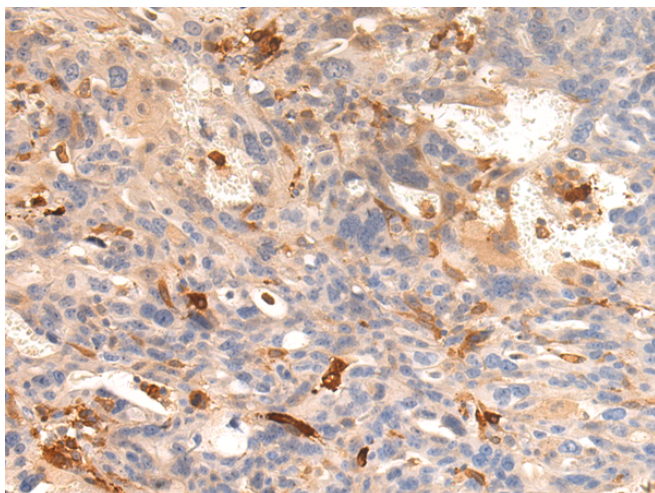
纯化: Antigen affinity purification

种属反应性: Human, Mouse

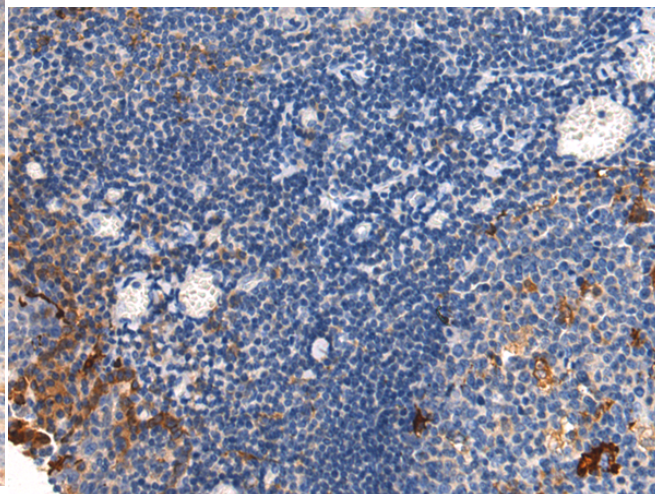
成分: PBS (without Mg²⁺ and Ca²⁺), pH 7.4, 150 mM NaCl, 0.05% Sodium Azide and 40% glycerol

研究领域: Signal Transduction, Cell Biology

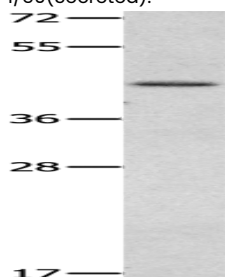
储存和运输: Store at -20°C. Avoid repeated freezing and thawing



Immunohistochemistry analysis of paraffin-embedded Human breast cancer tissue using 216652(MMP28 Antibody) at a dilution of 1/50(Secreted).



Immunohistochemistry analysis of paraffin-embedded Human tonsil tissue using 216652(Anti-MMP28 Antibody) at a dilution of 1/50.



Gel: 10%SDS-PAGE, Lysate: 50 µg;
Lane: Mouse heart tissue;
Primary antibody: 216652(MMP28 Antibody) at dilution 1/400;
Secondary antibody: Goat anti rabbit IgG at 1/8000 dilution;
Exposure time: 5 minutes