

MMP24 RABBIT PAB

货号: S213665

产品全名: MMP24 兔多抗

基因符号 MMP25; MMP-24; MT5MMP; MTMMP5; MT-MMP5; MT5-MMP; MT-MMP 5

UNIPROT ID: Q9Y5R2 (Gene Accession - NP_006681)

背景: Proteins of the matrix metalloproteinase (MMP) family are involved in the breakdown of extracellular matrix in normal physiological processes, such as embryonic development, reproduction, and tissue remodeling, as well as in disease processes, such as arthritis and metastasis. Most MMP's are secreted as inactive proproteins which are activated when cleaved by extracellular proteinases.

抗原: Synthetic peptide of human MMP24

经过测试的应用: ELISA, IHC

推荐稀释比: IHC: 25-100; ELISA: 2000-5000

种属反应性: Rabbit

克隆性: Rabbit Polyclonal

亚型: Immunogen-specific rabbit IgG

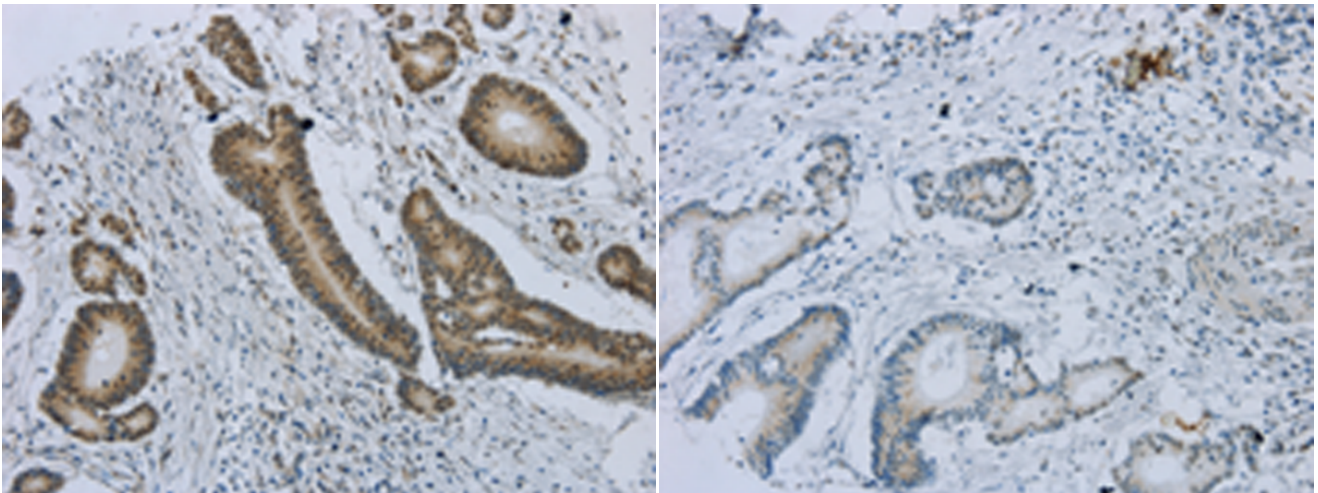
纯化: Antigen affinity purification

种属反应性: Human, Mouse, Rat

成分: PBS (without Mg²⁺ and Ca²⁺), pH 7.4, 150 mM NaCl, 0.05% Sodium Azide and 40% glycerol

研究领域: Signal Transduction, Cell Biology, Neuroscience

储存和运输: Store at -20°C. Avoid repeated freezing and thawing



Immunohistochemistry analysis of paraffin embedded Human colorectal cancer tissue using 213665(MMP24 Antibody) at a dilution of 1/25(Nucleus and Cytoplasm).

In comparison with the IHC on the left, the same paraffin-embedded Human colorectal cancer tissue is first treated with the synthetic peptide and then with 213665(Anti-MMP24 Antibody) at dilution 1/25.