

MMP21 RABBIT PAB

货号: S219919

产品全名: MMP21 兔多抗

基因符号: no me

UNIPROT ID: Q8N119 (Gene Accession - NP_671724)

背景: This gene encodes a member of the matrix metalloproteinase family. Proteins in this family are involved in the breakdown of extracellular matrix for both normal physiological processes, such as embryonic development, reproduction, and tissue remodeling, and disease processes, such as asthma and metastasis. The encoded protein may play an important role in embryogenesis, particularly in neuronal cells, as well as in lymphocyte development and survival.

抗原: Synthetic peptide of human MMP21

经过测试的应用: ELISA, IHC

推荐稀释比: IHC: 25-100; ELISA: 2000-5000

种属反应性: Rabbit

克隆性: Rabbit Polyclonal

亚型: Immunogen-specific rabbit IgG

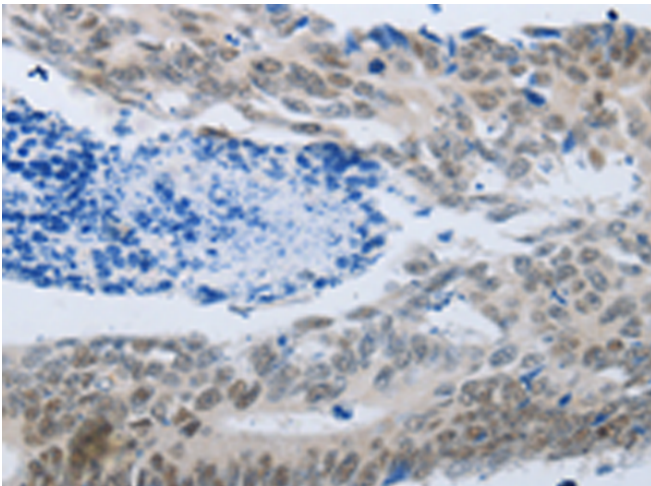
纯化: Antigen affinity purification

种属反应性: Human, Mouse

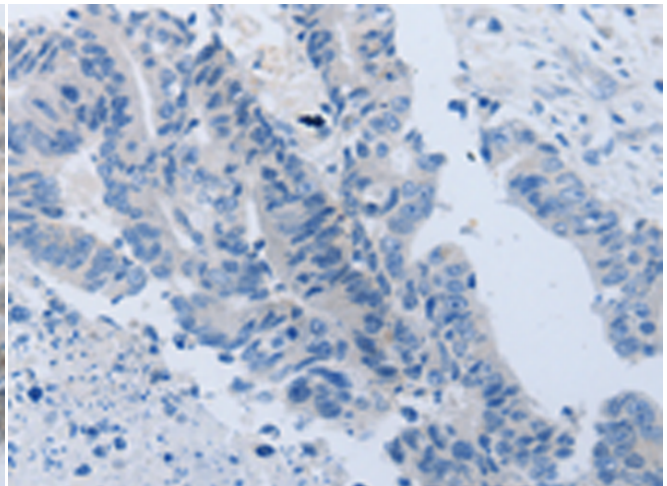
成分: PBS (without Mg²⁺ and Ca²⁺), pH 7.4, 150 mM NaCl, 0.05% Sodium Azide and 40% glycerol

研究领域: Cell Biology

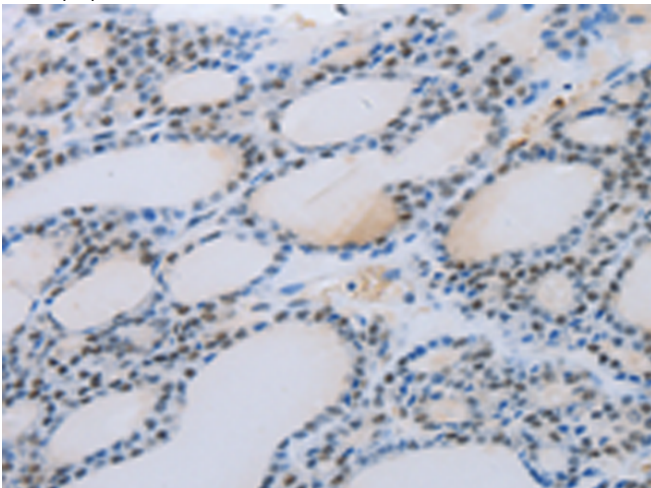
储存和运输: Store at -20°C. Avoid repeated freezing and thawing



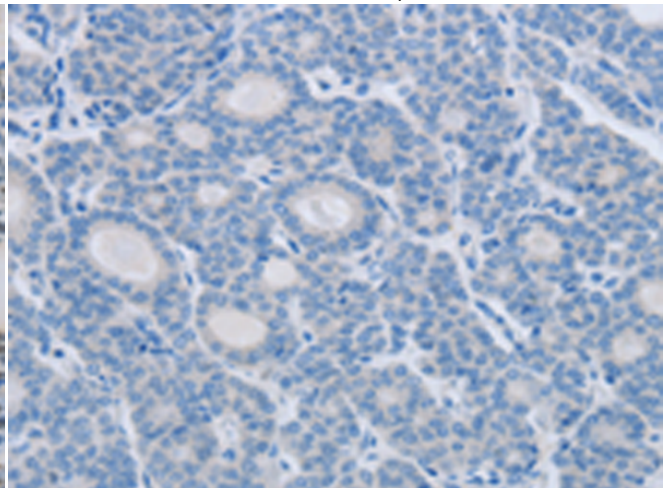
Immunohistochemistry analysis of paraffin embedded Human colon cancer tissue using 219919(MMP21 Antibody) at a dilution of 1/45 (cytoplasm, Nucleus).



In comparison with the IHC on the left, the same paraffin-embedded Human colon cancer tissue is first treated with the synthetic peptide and then with 219919(Anti-MMP21 Antibody) at dilution 1/45.



The image on the left is immunohistochemistry of paraffin-embedded Human thyroid cancer tissue using 219919(Anti-MMP21 Antibody) at a dilution of 1/45.



In comparison with the IHC on the left, the same paraffin-embedded Human thyroid cancer tissue is first treated with synthetic peptide and then with D260625(Anti-MMP21 Antibody) at dilution 1/45.



Product Description

Pioneering GTPase and Oncogene Product Development since 2010
