

## MMP14 RABBIT MAB

货号: N261560

产品全名: MMP14 兔单克隆抗体

基因符号 MMP-14; MMP-X1; MT-MMP; MT1MMP; MTMMPI; WNCHRS; MT1-MMP; MT-MMP 1

**UNIPROT ID:** P50281

背景: MMP14 Seems to specifically activate progelatinase A. May thus trigger invasion by tumor cells by activating progelatinase A on the tumor cell surface. Belongs to the peptidase M10A family.

抗原: A synthetic peptide of human MMP14

经过测试的应用: WB,IHC-P,IP

推荐稀释比: WB: 1/500-1/1000 IHC: 1/50-1/100 IP: 1/20

种属反应性: Rabbit

克隆性: Rabbit Monoclonal

克隆编号: R05-6H5

分子量: Calculated MW: 66 kDa; Observed MW: 66 kDa

亚型: IgG

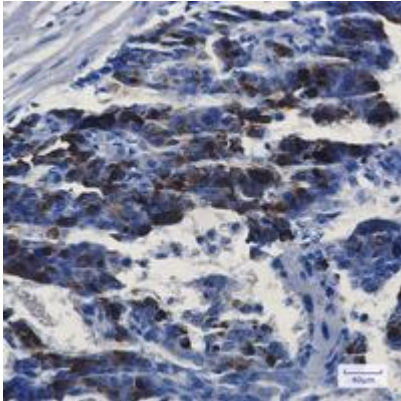
纯化: Affinity Purified

种属反应性: Human,Hamster

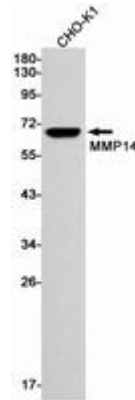
成分: PBS (without Mg<sup>2+</sup> and Ca<sup>2+</sup>), pH 7.3 containing 50% glycerol, 0.5% BSA and 0.02% sodium azide

研究领域: Cardiovascular

储存和运输: Store at -20°C. Avoid repeated freezing and thawing



Immunohistochemistry analysis of paraffin-embedded Human breast cancer using MMP14 antibody. High-pressure and temperature Sodium Citrate pH 6.0 was used for antigen retrieval.



Western blot analysis of MMP14 in CHO-K1 lysates using MMP14 antibody.