

MMP12 RABBIT MAB

货号: N262526

产品全名: MMP12 兔单克隆抗体

基因符号 Macrophage metalloelastase; MME; 3.4.24.65; Macrophage elastase; ME; hME; Matrix metalloproteinase-12; MMP-12; MMP12; HME

UNIPROT ID: P39900

背景: MMP-12 lacks a transmembrane domain and furin cleavage site. The zymogen for MMP-12 is about 54 kDa, and is quickly activated to the 45 kDa form, and this breaks down to cascade of active forms, ending with the common 22 kDa form. Stimulated macrophages produce MMP-12; it has also been found in osteosarcoma cells, synovial fibroblasts and lung fibroblasts.

抗原: A synthetic peptide of human MMP12

经过测试的应用: WB,IP

推荐稀释比: WB: 1/500-1/1000 IP: 1/20

种属反应性: Rabbit

克隆性: Rabbit Monoclonal

克隆编号: R03-2B9

分子量: Calculated MW: 54 kDa; Observed MW: 54,45 kDa

亚型: IgG

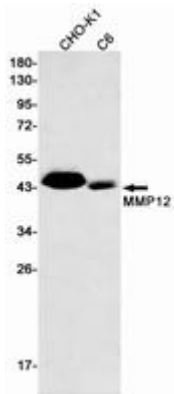
纯化: Affinity Purified

种属反应性: Human,Rat,Hamster

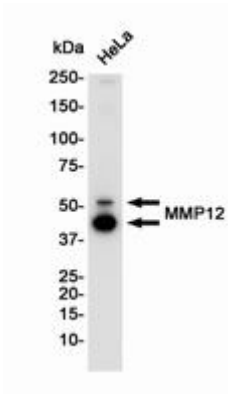
成分: PBS (without Mg²⁺ and Ca²⁺), pH 7.3 containing 50% glycerol, 0.5% BSA and 0.02% sodium azide

研究领域: Cardiovascular

储存和运输: Store at -20°C. Avoid repeated freezing and thawing



Western blot analysis of MMP12 in CHO-K1, C6 lysates using MMP12 antibody.



Western blot analysis of MMP12 in HeLa lysates using MMP12 antibody.