

MMP11 RABBIT PAB

货号: S219922

产品全名: MMP11 兔多抗

基因符号: ST3, SL-3, STMY3

UNIPROT ID: P24347 (Gene Accession - AAH57788)

背景: Proteins of the matrix metalloproteinase (MMP) family are involved in the breakdown of extracellular matrix in normal physiological processes, such as embryonic development, reproduction, and tissue remodeling, as well as in disease processes, such as arthritis and metastasis. Most MMP's are secreted as inactive proproteins which are activated when cleaved by extracellular proteinases. However, the enzyme encoded by this gene is activated intracellularly by furin within the constitutive secretory pathway. Also in contrast to other MMP's, this enzyme cleaves alpha 1-proteinase inhibitor but weakly degrades structural proteins of the extracellular matrix.

抗原: Synthetic peptide of human MMP11

经过测试的应用: ELISA, WB, IHC

推荐稀释比: IHC: 50-200;WB: 500-2000;ELISA: 1000-5000

种属反应性: Rabbit

克隆性: Rabbit Polyclonal

亚型: Immunogen-specific rabbit IgG

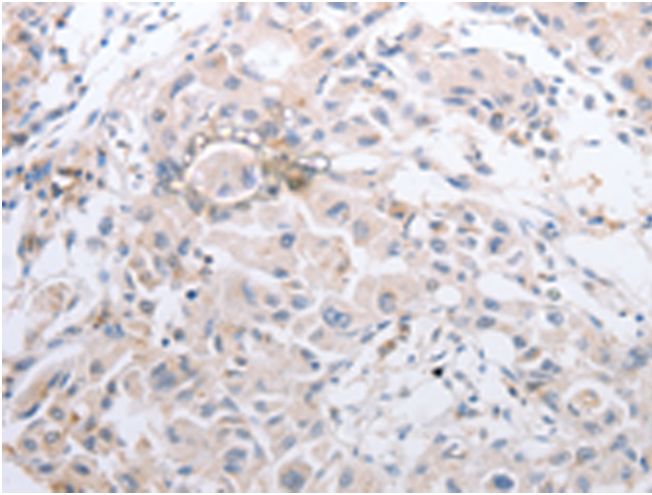
纯化: Antigen affinity purification

种属反应性: Human, Mouse

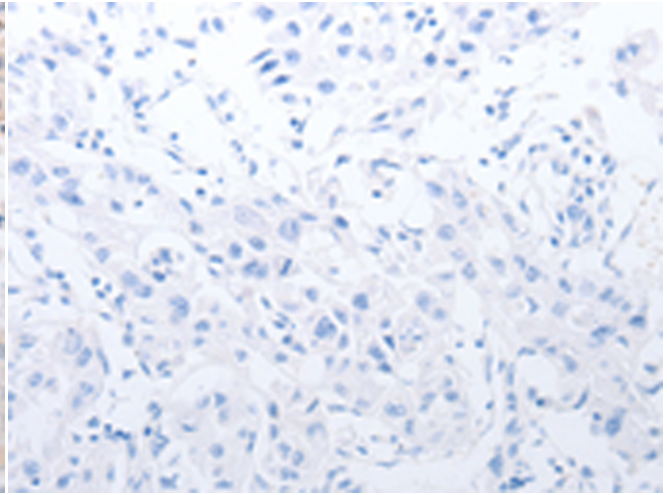
成分: PBS (without Mg²⁺ and Ca²⁺), pH 7.4, 150 mM NaCl, 0.05% Sodium Azide and 40% glycerol

研究领域: Signal Transduction, Cardiovascular, Cell Biology

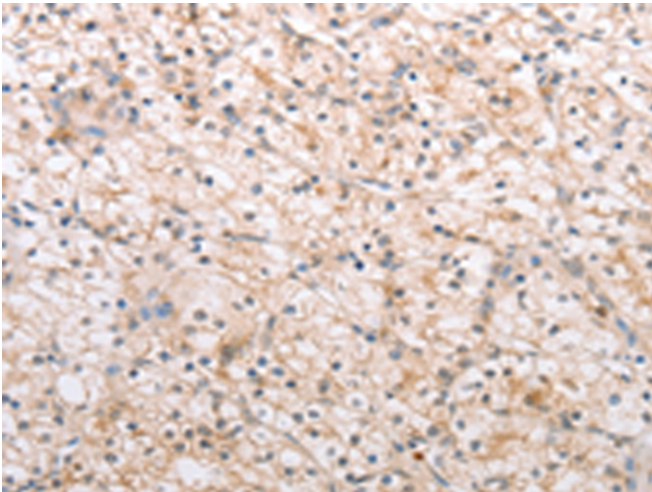
储存和运输: Store at -20°C. Avoid repeated freezing and thawing



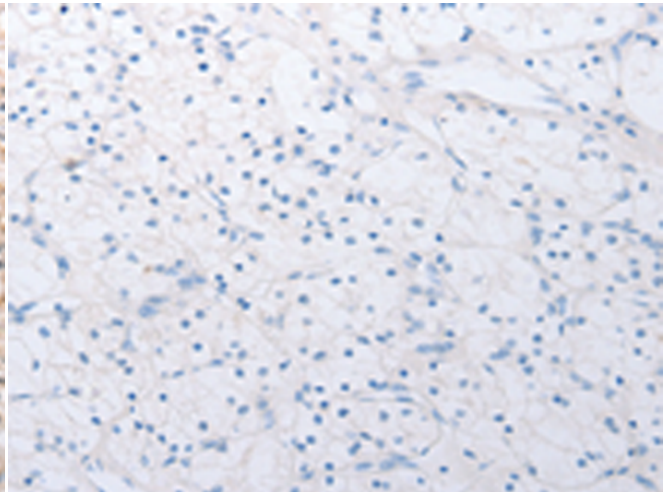
Immunohistochemistry analysis of paraffin embedded Human lung cancer tissue using 219922(MMP11 Antibody) at a dilution of 1/40(Cytoplasm, ExtraCellular matrix).



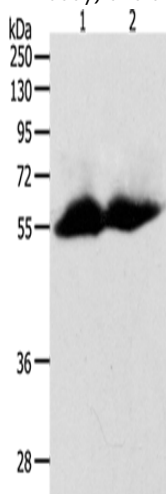
In comparison with the IHC on the left, the same paraffin-embedded Human lung cancer tissue is first treated with the synthetic peptide and then with 219922(Anti-MMP11 Antibody) at dilution 1/40.



The image on the left is immunohistochemistry of paraffin-embedded Human renal cancer tissue using 219922(Anti-MMP11 Antibody) at a dilution of 1/40.



In comparison with the IHC on the left, the same paraffin-embedded Human renal cancer tissue is first treated with synthetic peptide and then with D260628(Anti-MMP11 Antibody) at dilution 1/40.



Gel: 10%SDS-PAGE, Lysate: 60 µg;
Lane 1-2: Human colon tissue, Human ovarian cancer tissue;
Primary antibody: 219922(MMP11 Antibody) at dilution 1/600;
Secondary antibody: Goat anti rabbit IgG at 1/8000 dilution;
Exposure time: 1 minute



Product Description

Pioneering GTPase and Oncogene Product Development since 2010
