

## MLH1 RABBIT MAB

货号: N261637

产品全名: MLH1 兔单克隆抗体

基因符号 MLH1; COCA2; DNA mismatch repair protein Mlh1; MutL protein homolog 1

**UNIPROT ID:** P40692

**背景:** This gene was identified as a locus frequently mutated in hereditary nonpolyposis colon cancer (HNPCC). It is a human homolog of the E. coli DNA mismatch repair gene mutL, consistent with the characteristic alterations in microsatellite sequences (RER+ phenotype) found in HNPCC. Alternatively spliced transcript variants encoding different isoforms have been described, but their full-length natures have not been determined.

**抗原:** A synthetic peptide of human MLH1

**经过测试的应用:** WB, ICC/IF, IP

**推荐稀释比:** WB: 1/500-1/1000 IF: 1/50-1/200 IP: 1/20

**种属反应性:** Rabbit

**克隆性:** Rabbit Monoclonal

**克隆编号:** R02-2E8

**分子量:** Calculated MW: 85 kDa; Observed MW: 85 kDa

**亚型:** IgG

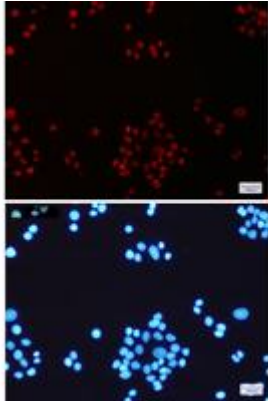
**纯化:** Affinity Purified

**种属反应性:** Human, Mouse and Rat

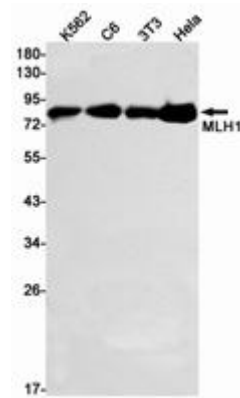
**成分:** PBS (without Mg<sup>2+</sup> and Ca<sup>2+</sup>), pH 7.3 containing 50% glycerol, 0.5% BSA and 0.02% sodium azide

**研究领域:** Epigenetics and Nuclear Signaling

**储存和运输:** Store at -20°C. Avoid repeated freezing and thawing



Immunocytochemistry analysis of MLH1 (green) in HeLa using MLH1 antibody, and DAPI (blue)



Western blot analysis of MLH1 in K562, C6, 3T3, HeLa lysates using MLH1 antibody.