

## MLH1 RABBIT MAB

货号: N263429

产品全名: MLH1 兔单克隆抗体

基因符号 MLH1; COCA2; DNA mismatch repair protein Mlh1; MutL protein homolog 1

**UNIPROT ID:** P40692

**背景:** This gene was identified as a locus frequently mutated in hereditary nonpolyposis colon cancer (HNPCC). It is a human homolog of the E. coli DNA mismatch repair gene mutL, consistent with the characteristic alterations in microsatellite sequences (RER+ phenotype) found in HNPCC. Alternatively spliced transcript variants encoding different isoforms have been described, but their full-length natures have not been determined.

**抗原:** Recombinant protein of human MLH1

**经过测试的应用:** WB, ICC/IF

**推荐稀释比:** WB: 1/500-1/1000 IF: 1/50-1/200

**种属反应性:** Rabbit

**克隆性:** Rabbit Monoclonal

**克隆编号:** R07-5D3

**分子量:** Calculated MW: 85 kDa; Observed MW: 85 kDa

**亚型:** IgG

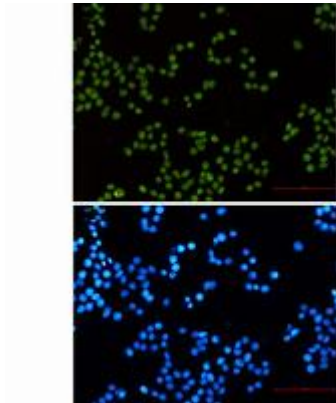
**纯化:** Affinity Purified

**种属反应性:** Human

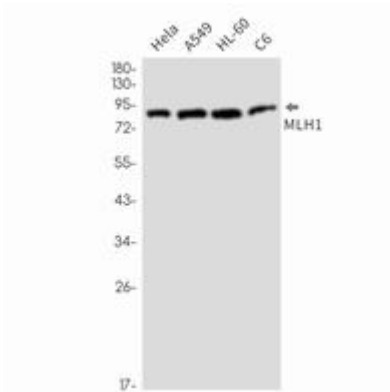
**成分:** PBS (without Mg<sup>2+</sup> and Ca<sup>2+</sup>), pH 7.3 containing 50% glycerol, 0.5% BSA and 0.02% sodium azide

**研究领域:** Epigenetics and Nuclear Signaling

**储存和运输:** Store at -20°C. Avoid repeated freezing and thawing



Immunocytochemistry analysis of MLH1 (green) in HeLa using MLH1 antibody, and DAPI (blue)



Western blot analysis of MLH1 in HeLa, A549, HL-60, U2OS lysates using MLH1 antibody.