

MLH1 (4C1) MOUSE MAB

货号: N261176

产品全名: MLH1 (4C1) 小鼠单抗

基因符号 MLH1; COCA2; DNA mismatch repair protein Mlh1; MutL protein homolog 1

UNIPROT ID: P40692

背景: This gene was identified as a locus frequently mutated in hereditary nonpolyposis colon cancer (HNPCC). It is a human homolog of the E. coli DNA mismatch repair gene mutL, consistent with the characteristic alterations in microsatellite sequences (RER+ phenotype) found in HNPCC. Alternatively spliced transcript variants encoding different isoforms have been described, but their full-length natures have not been determined.

抗原: Purified recombinant fragment of MLH1 (aa381-483) expressed in E. Coli.

经过测试的应用: WB, ICC/IF

推荐稀释比: WB: 1/500-1/1000 IF: 1/50-1/200

种属反应性: Mouse

克隆性: Mouse Monoclonal

克隆编号: 4C1-D9-C7

分子量: Calculated MW: 85 kDa; Observed MW: 85 kDa

亚型: IgG1

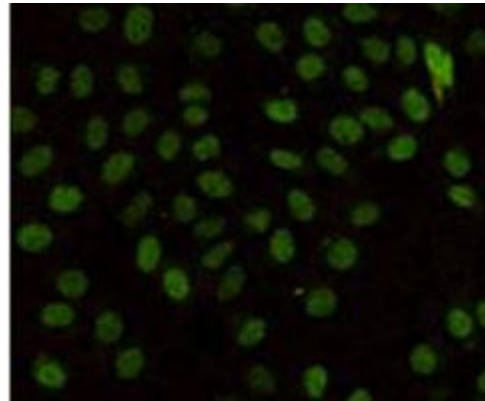
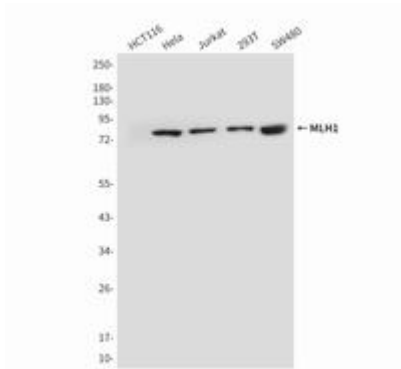
纯化: Ascitic Fluid

种属反应性: Human, Monkey

成分: PBS (without Mg²⁺ and Ca²⁺), pH 7.3 containing 50% glycerol, 0.5% BSA and 0.02% sodium azide

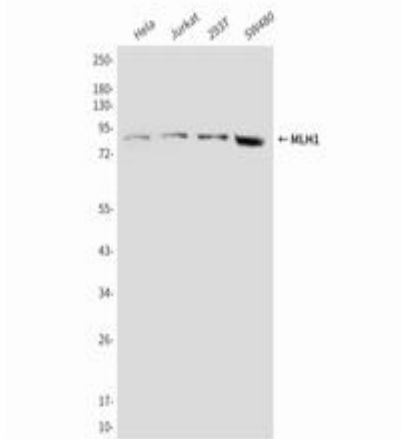
研究领域: Epigenetics and Nuclear Signaling

储存和运输: Store at -20°C. Avoid repeated freezing and thawing



Western blot analysis of MLH1 (4C1) in SW48, 293T, Jurkat and HeLa lysates using MLH1 (4C1) antibody

Immunocytochemistry analysis of MLH1 (4C1) in HeLa cells using MLH1 (4C1) antibody.



Western blot analysis of MLH1 (4C1) in HeLa, Jurkat, 293T and SW480 lysates using MLH1 (4C1) antibody