

## MKI67 RABBIT PAB

货号: S219509

产品全名: MKI67 兔多抗

基因符号 KIA; MIB-; MIB-1; PPP1R105

**UNIPROT ID:** P46013 (Gene Accession - NP\_002408 )

**背景:** This gene encodes a nuclear protein that is associated with and may be necessary for cellular proliferation. Alternatively spliced transcript variants have been described. A related pseudogene exists on chromosome X.

**抗原:** Fusion protein of human MKI67

**经过测试的应用:** ELISA, IHC

**推荐稀释比:** IHC: 100-300; ELISA: 5000-10000

**种属反应性:** Rabbit

**克隆性:** Rabbit Polyclonal

**亚型:** Immunogen-specific rabbit IgG

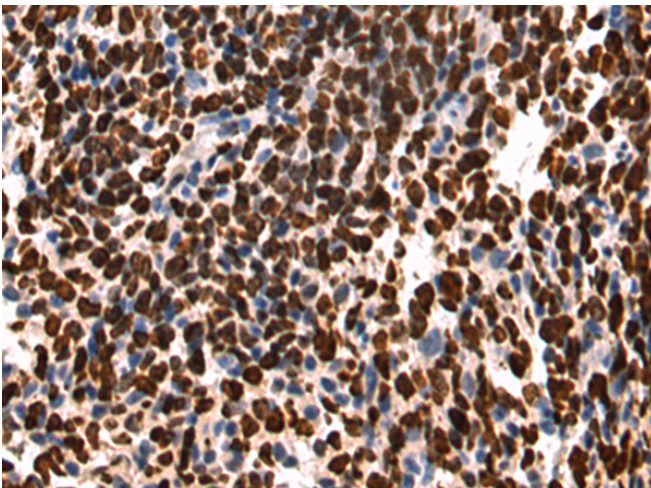
**纯化:** Antigen affinity purification

**种属反应性:** Human

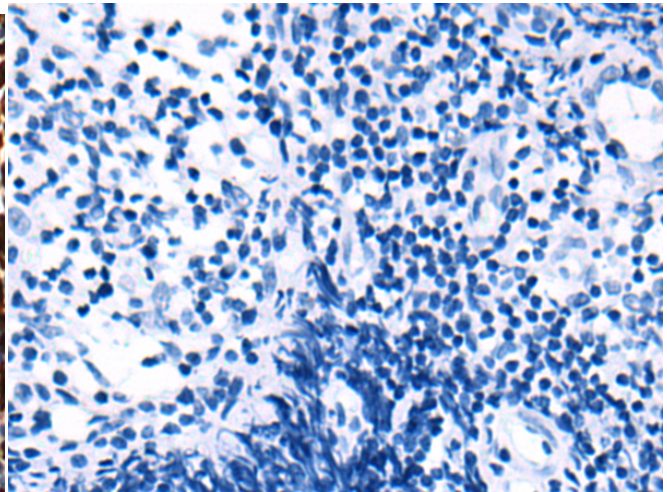
**成分:** PBS (without Mg<sup>2+</sup> and Ca<sup>2+</sup>), pH 7.4, 150 mM NaCl, 0.05% Sodium Azide and 40% glycerol

**研究领域:** Cancer, Neuroscience

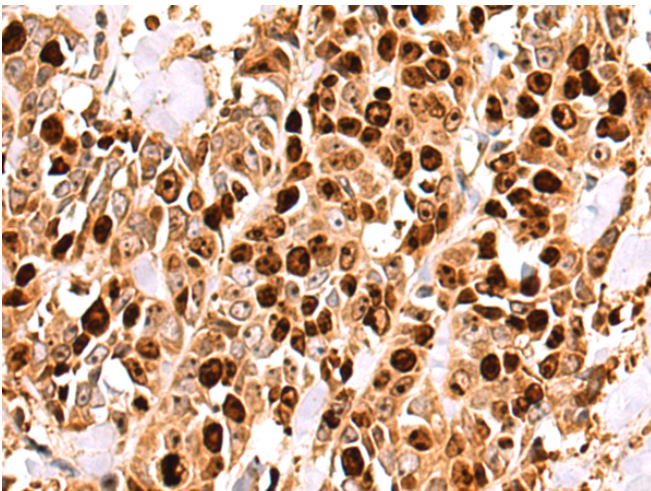
**储存和运输:** Store at -20°C. Avoid repeated freezing and thawing



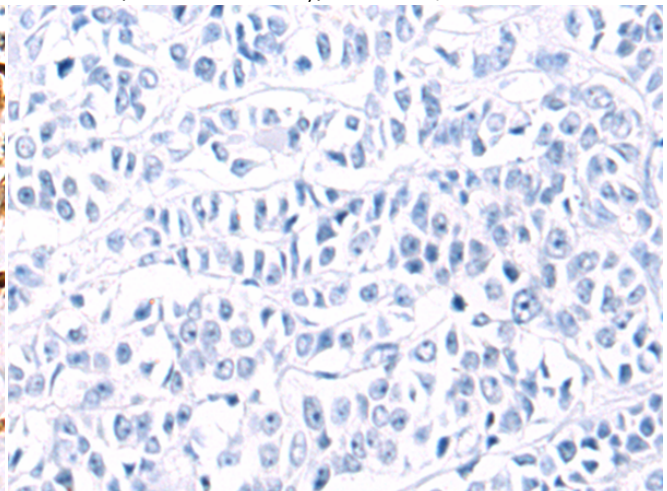
Immunohistochemistry analysis of paraffin embedded Human tonsil tissue using 219509(MKI67 Antibody) at a dilution of 1/85(Nucleus).



In comparison with the IHC on the left, the same paraffin-embedded Human tonsil tissue is first treated with the fusion protein and then with 219509(Anti-MKI67 Antibody) at dilution 1/85.



The image on the left is immunohistochemistry of paraffin-embedded Human breast cancer tissue using 219509(Anti-MKI67 Antibody) at a dilution of 1/85.



In comparison with the IHC on the left, the same paraffin-embedded Human breast cancer tissue is first treated with fusion protein and then with D227440(Anti-MKI67 Antibody) at dilution 1/85.



# Product Description

Pioneering GTPase and Oncogene Product Development since 2010

---