

MITOFUSIN 2 RABBIT PAB

货号: N225370

产品全名: Mitofusin 2 兔多抗

基因符号 HSG; MARF; CMT2A; CPRP1; CMT2A2; HMSN6A; CMT2A2A;
CMT2A2B

UNIPROT ID: O95140

背景: Plays an important role in the regulation of vascular smooth muscle cell proliferation. Involved in the clearance of damaged mitochondria via selective autophagy (mitophagy). Is required for PARK2 recruitment to dysfunctional mitochondria.

抗原: The antiserum was produced against synthesized peptide derived from human Mfn2. AA range:354-403

经过测试的应用: WB,IHC-P,ELISA

推荐稀释比: WB: 1/500-1/1000 IHC: 1/50-1/100 ELISA: 1/10000

种属反应性: Rabbit

克隆性: Rabbit Polyclonal

分子量: Calculated MW: 86 kDa; Observed MW: 86 kDa

亚型: IgG

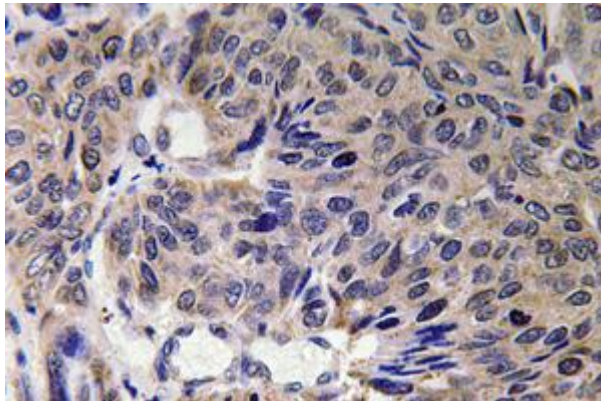
纯化: Affinity Chromatography

种属反应性: Human, Mouse and Rat

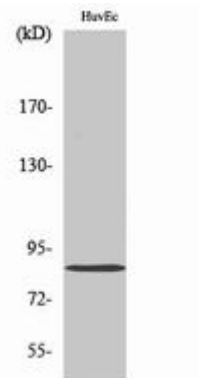
成分: PBS (without Mg²⁺ and Ca²⁺), pH 7.3 containing 50% glycerol, 0.5% BSA and 0.02% sodium azide

研究领域: Tags & Cell Markers

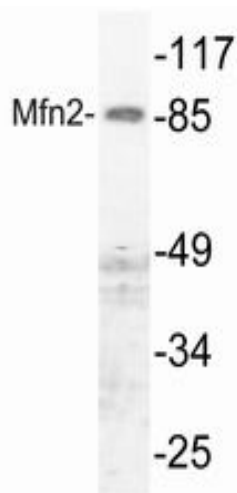
储存和运输: Store at -20°C. Avoid repeated freezing and thawing



Immunohistochemistry analysis of paraffin-embedded Human lung carcinoma tissue using Mitofusin 2 antibody. High-pressure and temperature Sodium Citrate pH 6.0 was used for antigen retrieval.



Western blot analysis of Mitofusin 2 in various lysates using Mitofusin 2 antibody.



Western blot analysis of Mitofusin 2 in HUVEC lysates using Mfn2 antibody.