

## MITOFUSIN 1 RABBIT MAB

货号: N263426

产品全名: Mitofusin 1 兔单克隆抗体

基因符号 HR2; mKIAA4032; D3ErtD265e; 2310002F04Rik; 6330416C07Rik

**UNIPROT ID:** Q8R4Z9

背景: Mitochondrial outer membrane GTPase that mediates mitochondrial clustering and fusion.

抗原: A synthetic peptide of rat Mitofusin 1

经过测试的应用: WB,IP

推荐稀释比: WB: 1/500-1/1000 IP: 1/20

种属反应性: Rabbit

克隆性: Rabbit Monoclonal

克隆编号: R05-3A8

分子量: Calculated MW: 84 kDa; Observed MW: 84 kDa

亚型: IgG

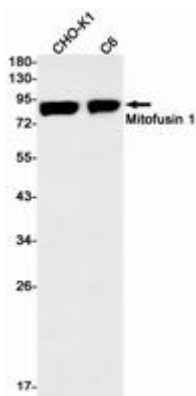
纯化: Affinity Purified

种属反应性: Mouse,Rat,Hamster

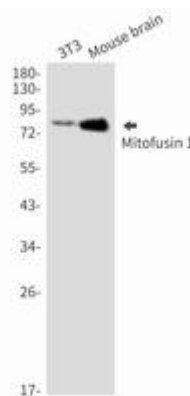
成分: PBS (without Mg<sup>2+</sup> and Ca<sup>2+</sup>), pH 7.3 containing 50% glycerol, 0.5% BSA and 0.02% sodium azide

研究领域: Neuroscience

储存和运输: Store at -20°C. Avoid repeated freezing and thawing



Western blot analysis of Mitofusin 1 in CHO-K1, C6 lysates using Mitofusin 1 antibody.



Western blot analysis of Mitofusin 1 in 3T3, mouse brain lysates using Mitofusin 1 antibody.

