

MITOFILIN RABBIT PAB

货号: N225748

产品全名: Mitofilin 兔多抗

基因符号 HMP; P87; P89; PIG4; Mic60; PIG52; MINOS2; P87/89

UNIPROT ID: Q16891

背景: Component of the MICOS complex, a large protein complex of the mitochondrial inner membrane that plays crucial roles in the maintenance of crista junctions, inner membrane architecture, and formation of contact sites to the outer membrane. Plays an important role in the maintenance of the MICOS complex stability and the mitochondrial cristae morphology (PubMed:22114354, PubMed:25781180).

抗原: A synthesized peptide derived from human Mitofilin

经过测试的应用: WB,IHC-P,ICC/IF,FC

推荐稀释比: WB: 1/500-1/1000 IHC: 1/50-1/100 IF: 1/50-1/200 FC: 1/50-1/100

种属反应性: Rabbit

克隆性: Rabbit Polyclonal

分子量: Calculated MW: 84 kDa; Observed MW: 84 kDa

亚型: IgG

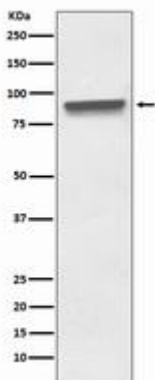
纯化: Affinity Chromatography

种属反应性: Human

成分: PBS (without Mg²⁺ and Ca²⁺), pH 7.3 containing 50% glycerol, 0.5% BSA and 0.02% sodium azide

研究领域: Signal Transduction

储存和运输: Store at -20°C. Avoid repeated freezing and thawing



Western blot analysis of Mitofilin in HeLa lysates using Mitofilin antibody.



Product Description

Pioneering GTPase and Oncogene Product Development since 2010
